

INTERIOR VIEWS

from classical to contemporary

HAL SWANSON & DAN OLLIS

SWANSON-OLLIS
INTERIORS

INTERIOR VIEWS

*A visual journey through gracious styles of interior design
from coast to coast and in between*

Hal Swanson & Dan Ollis

SWANSON-OLLIS INTERIORS

HAL SWANSON & DAN OLLIS

LOS ANGELES

T 323.933.8745

F 323.933.8746

WWW.SWANSON-OLLIS.COM

Copyright 2009 by the authors of this book, Hal Swanson and Dan Ollis. The book authors retain sole copyright to their contributions to this book. All rights reserved. No part of this publication may be reproduced or transmitted in any form or by any means, electronic, mechanical, photocopying, recording, or otherwise, without prior consent of the authors.





DEDICATION

To our wonderful clients and numerous mentors who have enriched our lives with so much beauty, inspiration and thoughtful consideration, we kindly dedicate this book.

TABLE OF CONTENTS

10	Introduction
13	Design Philosophy
19	Transition in Virginia
41	Soft Contemporary
57	California Spanish
93	Period French Regency
117	Museum Contemporary
129	Classical Penthouse
151	Rancho Mirage Artful Contemporary
169	Asian Influence
179	Desert Retreat
187	Casually Classic Style
200	2009 Shady Canyon <i>Casa California</i>
208	2011 Newport Coast <i>Maison de la Mer</i>
216	2011 Pasadena Showcase
224	2011 Beverly Hills <i>Virginia Robinson Garden Tour</i>
228	2012 Laguna Beach <i>Costa Azul</i>
235	Swanson-Ollis Home Furnishings Collection

TABLE OF CONTENTS



19
TRANSITION IN VIRGINIA



41
SOFT CONTEMPORARY

TABLE OF CONTENTS



57
CALIFORNIA SPANISH

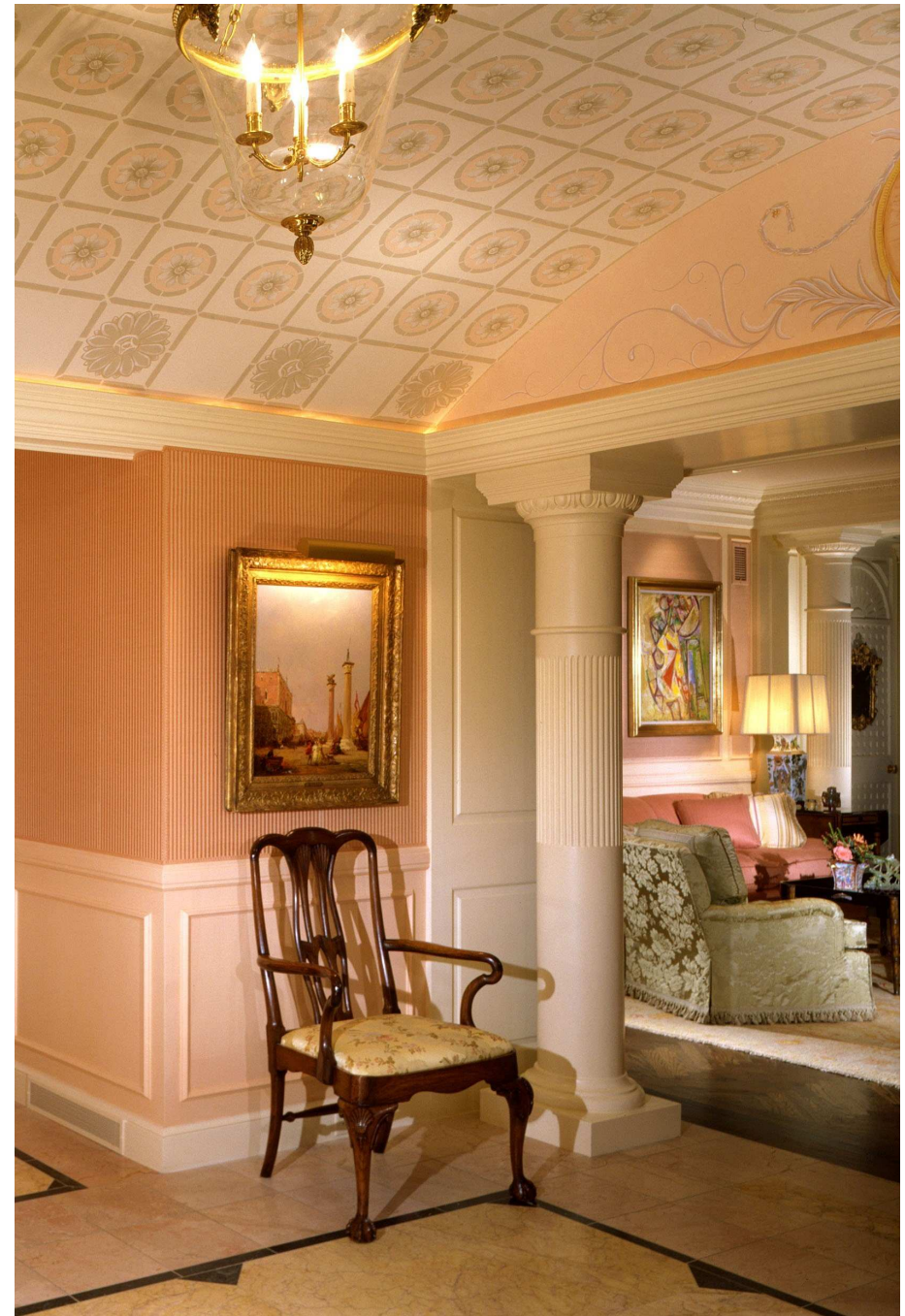


93
PERIOD FRENCH REGENCY

TABLE OF CONTENTS



117
MUSEUM CONTEMPORARY



129
CLASSICAL PENTHOUSE

TABLE OF CONTENTS



151
RANCHO MIRAGE ART



169
ASIAN INFLUENCE

TABLE OF CONTENTS



179
DESERT RETREAT



187
CASUALLY CLASSIC STYLE

TABLE OF CONTENTS



200
2009 Orange County
Philharmonic House of Design
Master Guest Suite



208
2011 Orange County
Philharmonic House of Design
Great Room & Loggia

TABLE OF CONTENTS



216
2011 Pasadena Showcase House
Master Bedroom Suite



224
2011 Virginia Robinson Gardens
Grand Salon

TABLE OF CONTENTS



235

SWANSON-OLLIS HOME FURNISHINGS COLLECTION

TABLE OF CONTENTS



INTRODUCTION

This book has definitely been our most elusive professional endeavor, until now that particular undertaking that laid buried on the farthest, darkest shelf. However, numerous compelling factors awakened our dormant longing and helped us finally muster the courage and time needed for the task of creating our visual story in the form of this book. Of course, we soon acknowledged that photos alone could not fully do justice and that a few well-placed words would be required. Rest assured, for two visually-talented designers, this caused more than mere trepidation. Even now as our book is in print, we are still not sure that the visual and literary parts of our brains remotely like one another. But possibly our book is living proof of divine intervention at best or at least proof of a very short-lived mental truce which allowed words to flow until the very last page was written. Regardless, we are resoundingly grateful....and forever humbled. Renowned authors....maybe not! But surely...modest yet talented designers!

Over the years, we started to realize that we had developed our company and design talents in a way that truly set us apart from most professionals in our field. This realization and a few other external influences provided the needed push to complete this book. But most would not believe that it would be the simplest of recurring questions that would finally serve as our catalyst....***“What is your style?”***. So we have designed our book in a way to showcase our broad range of talent and genres of interior decoration that we have successfully mastered, and to hopefully impress any potential client that we approach each new project like a custom jeweler would create a one-of-a-kind masterpiece for a loved one. Everything that we do starts with understanding our client’s desires and lifestyles, and then providing warmth, balance and creature comfort in which to live.

Please know that we do not live in the world of reality design as portrayed on endless television shows. And as we know to be true here in Los Angeles, *there is no reality in reality television!* We are however blessed with wonderful and sometimes intricate projects, each requiring varying degrees of professional design acumen, care and supervision. Not only are we trained and schooled interior designers, we are also graduates in the field of interior architecture. Of course this easily sets us apart from the crowd. It is our hope though to earn your approval that we also possess those creative intangibles, of which no schooling and possibly a lifetime of experience can adequately impart.

We have made a mission of studying, exploring and mastering many styles of interior design. Since our inception in 1989, this creative approach has been the overriding reason that we have been commissioned to design everything from custom residences to luxury hotels, restaurants and executive offices. We are fortunate to have the trust of a wide range of clients for the design of their diverse and often elaborate projects. But we would have it no other way!

In contrast to those interior designers whose work is known for a repetition of expected design elements on nearly every project, we find

that true success is achieved when the finished interior design speaks specifically of our clients' design proclivities. We do not design Swanson-Ollis projects for our clients but rather help them manifest their own expressions and desires. Our main goal is to create the perfect blend of color, texture, furnishings and spatial balance in a way that the eye rarely focuses on one particular element upon initial viewing. When this is achieved, our clients and their guests always remark about newfound treasures which have actually always been there from the start. This phenomenon can happen as simply as when the sunlight comes to rest on a certain adornment or design element, and everything around seems to come to life for the first time---at least at that particular moment from the perspective of the viewer---or when one suddenly notices an intricate and subtle detail in a particular piece of furniture or fabric, yet never noticed until now. Our designs are intended to be time-tested, never short-term or trendy.

Because today's lifestyles are so fluid, flexible and subtly blended, now more than ever is there the need for expert design sensitivity. For sure, we welcome and enjoy opportunities to create "period specific" interiors, as depicted in our Period French Regency penthouse project. However, successful design today demands an innate ability to effortlessly transition between numerous design styles. For this reason, we have dedicated ourselves to achieving mastery of numerous design disciplines. Our pursuit of further design exposure will always be an unending process. Life, as well as our approach to interior design, has actually become more intriguing and rewarding in our twenty-plus years of experience in this field for this reason.

As you peruse the contents within these pages, you will see our artistic journey as well. One project appropriately entitled Museum Contemporary is that of one of America's leading contemporary art collectors. It actually represents the starting point of our careers together many years ago, and not only features world-renowned works of art but also architecture and interior design that confidently complement each other. From the home's diagonal, vaulted stainless steel entry corridor to the contrasting floors of black Brazilian granite and bleached maple wood, even the furniture exhibits artful yet sophisticated use. For a few initial years we would be valued primarily for this type of interior design. And although we are always pleased to undertake new contemporary commissions, we are now very accomplished and eager to interpret and undertake the design of many other genres of style.

As a result of bridging so many design perspectives, we can attest that our world is at times a visual feast. Occasionally we are privy to viewings of art, antique furniture, rugs and engravings which are so rare that there is very limited chance that one will ever see these pieces again in this lifetime. There is definitely a sense of awe which sometimes borders on reverence as our antiquities dealers recount background stories and provenances. One of our first projects, which is listed under the title Asian Influence, and a later commission shown within as Period French Regency share similar tales. Both present a collection of antiques that few can claim to rival. Among the array of museum quality Asian antiques in the first project are a pair of large Japanese low tables constructed with single plank wood tops which stand out. Because of the rarity of such tables, they are today protected as national treasures of which exportation from Japan is no longer permitted. Additionally, while in New Orleans searching for French antiques and art for a client's luxury two-story penthouse, a stroke of luck would lead us to a private viewing of the estate of the patriarch of one of the city's revered antique dealer families. Presented within the chapter's spread of photos are numerous items purchased from that estate. Most notable among the residence's many excellent appointments are a stately pair of matching marble fireplace mantels from a Parisian estate, a very rare 18th century three-perspective painting of a French landscape and a magnificent museum quality 18th century painted and gilt Louis XV style console. And even within the story of our Classical

Penthouse, prominently portrayed in the master bedroom, is an exquisite museum quality 18th century Northern Italian armoire with chinoiserie decorations. To be able to view such rarities on a regular basis is definitely one of the blessings of our world.

Upon further viewing, a few excellent examples of our design flexibility are presented in the chapters Transition in Virginia and California Spanish. One will witness a smooth and balanced mix of French, Spanish, English, clean-lined Asian antiques interspersed with contemporary furnishings and art.

Yet there is never a sense of betrayal to the homes' original design intentions. In both cases, we were contracted by clients whose first acquisitions and design inclinations were decidedly more contemporary in nature. However, they had arrived at new phases in their lives and had recently purchased respectively circa 1920's Gothic Tudor and Spanish Mediterranean style houses. Both projects required a definite sense of vision and designing expertise in order to achieve a much softer and somewhat classical environment, however fully incorporating many of their original contemporary purchases. This has been a very common and successful occurrence for us.

We hope that our selected portfolio of projects in this book, along with a chapter devoted to the inaugural presentation of our new furnishings collection, give a balanced overview of our range of talents. We are honored to share them with you.



DESIGN PHILOSOPHY

We adhere to a philosophy that beautiful interior design should speak passionately and specifically about the lives of our clients. Our overall goal is to create a very balanced and appealing palette in which the eye does not focus on any one particular element of a room or space, but rather senses an alluring and intriguing visual rhythm. Successful interior design should continue to have a comforting and sensory impact for many years to come. Hence, regardless of the specific design perspective for a project, our design treatments are always time-honored and never trendy.

We believe that there is a tremendous difference between interior design and interior decoration. As trained interior architects and designers, we are able to confidently serve both the technical and creative aspects of our client's projects.

We are dedicated to a concerted and career-long effort to master many styles of interior design. Our signature mark is a great eye for color, texture and overall finish, and a second sense for balance in relation to spatial volume, height and proportion. All primary surfaces are addressed with the understanding that floors, walls and ceilings require equal treatment if true balance is to be achieved. It is our mission to make the largest spaces feel warm and inviting while also subtly designing smaller spaces in a manner in which they project a more comfortable and voluminous impression.

One should never arrive at any of our client's homes to find repetitive and signature design elements which follow from project to project. Our finished design should specifically be a gracious reflection of our client's lives and loves.



TRANSITION IN VIRGINIA





Meticulously restored in Richmond, Virginia, this 1920's estate has been gracefully transformed in a manner respectful to the home's architecture and to the eclectic acquisitions and modern lifestyle of its new owners from Los Angeles.





A pair of J. Robert Scott lounge chairs are shown upholstered in Clarence House velvet with a dragonfly motif sewn in gold thread. In the background is a rare tall antique bone inlaid Indian cabinet. A clean-line pair of polished nickel and marble side tables by J. Robert Scott separate the lounge chairs.



A collection of original 1678 engravings of flora from the Malabar Islands flanks the fireplace. In pyramid formation, fire balls replicating cannon balls sit atop a mound of sand. A custom round J. Robert Scott tufted ottoman upholstered in supple kidskin leather alternately serves as seating or a table.



TRANSITIONAL STYLE

There was natural trepidation in relocating from the West Coast to Virginia for our clients who had become very comfortable in their soft contemporary surroundings on Los Angeles's Westside. Primarily, could they find a home and setting compatible with their lifestyle---and find the home with the help of a Richmond realtor and weekly updates via the Internet?

Not an easy task considering the distance between the coasts, a daughter's hectic school schedule and the desire to travel only for viewings when a potential home was declared a "must see".

The end result, after viewing many homes that spoke specifically of Williamsburg and Jeffersonian influences, our clients landed upon a 1920's Gothic Tudor in Richmond's West End. The home attracted our client's interest because it reflected the charm and comfort of residences in Los Angeles's older Hancock Park neighborhood, and because of its charming setting off a small, private street with shared driveways. The

small neighborhood had been declared an official bird sanctuary, and this house was the original estate home on a twenty acre parcel of land which eventually became the setting for the few adjacent and elegant residences. Today the home sits on approximately three acres of property, but still retains total access to a meandering stony brook with an aging, arched brick and stone bridge that leads to a private outdoor entertaining terrace.

The home was like most homes of its style, very dark and stately in nature. Our goal was to brighten the home and give a more "open" feel where possible without losing the original charm. We achieved that objective by replacing the heavy panels of the front door with glass, and by bleaching the dark hardwoods and subsequently applying an oatmeal-colored glaze and finish. We softened our client's contemporary edge by achieving a fine balance between traditionally inspired furniture of Dennis & Leen and Dessin Fournir with the cleaner lines of J. Robert Scott and Donghia. There is also a smattering of



Asian antiques throughout, a beautiful antique Oushak rug in the entry and a surprising, tall bone-inlaid Indian cabinet in the living room. We introduced late 1600's etchings of the botanical studies of the Malabar Islands near India and 1700's original architectural renderings of German water towers which offset and blended comfortably with our client's own contemporary art pieces and a new collection of floral and botanical radio-graphical images by a Colorado radiologist-turned-artist. The only interior architectural alterations undertaken were the enlarging of the kitchen to encompass the space of the older kitchen and adjoining butler's pantry, and the reconfiguration of a formerly dark and windowless master bath and walk-in closet. What emerged was fully appointed and transitionally designed. A full working kitchen emerged with traditional cabinets, yet also exhibiting a surprising clean-lined center island with aluminum-faced drawers and a honed granite surface. The new master bath, closet and adjoining dressing room became a light-filled space with beautiful windows over-



Excavated from the gardens during the remodeling of this home, the arm of a sculpture which once graced the property has a new purpose.

overlooking a secluded stretch of woods. Of course, privacy was maintained with the subtle placement of remotely controlled translucent shades. Lastly as a matter of modern consideration, all other baths were brought up to the latest standards and finishes. This home definitely embodies the elegant nature of an older Virginian era but speaks wonders of a welcoming and evolving, newer South!!





ABOVE: The home's breakfast room opens to a beautifully appointed and private screened porch, allowing for much better usage of this space when entertaining in the warmer months of the year. An eclectic mix of furniture, art and accessories blends easily here. The room's original tile floor remains in perfect condition, while a newly installed bluestone limestone floor transitions to the outdoor patio in same. OPPOSITE PAGE: The kitchen, featuring cabinetry in keeping with the home's architecture, has a surprisingly sleek aluminum front island with honed marble surface. Of special note are a collection of very rare hand-coloured copperplate engravings of apples by Dutch artist Johann Hermann Knoop, circa 1758-1771.



TRANSITIONAL STYLE

This eclectic dining room interestingly offers a most visually stimulating setting. The eye is immediately drawn to an impressive collection of radiographical prints by Seattle artist Steven Meyers which represents a study of native North American flora. Centered in the room is lovely hand-planed and waxed Dessin Fournir dining table surrounded by a mix of J. Robert Scott dining chairs. The primary light source for the room is a Donghia murano glass chandelier, evoking a sense of art, whimsy and functionality. Beneath the windows (shown on opposite page) is an exquisite antique Chinese cabinet with remarkable chinoiserie decorations. Matchstick blinds made of very delicate natural reeds give a very subtle air of privacy and allure.



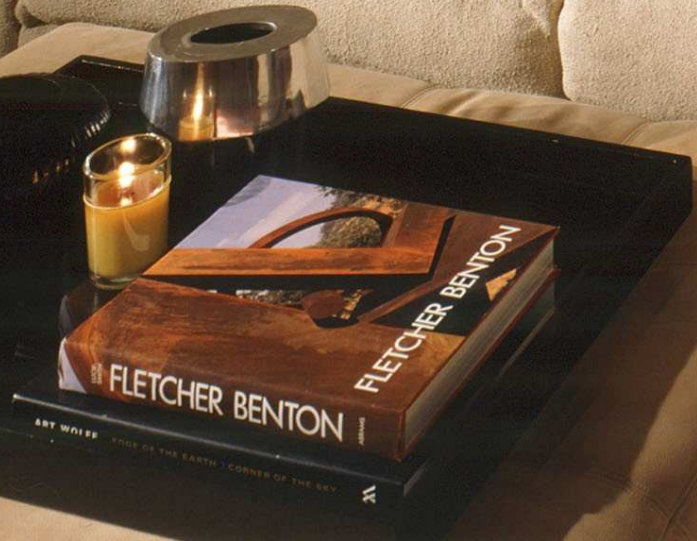
TRANSITIONAL STYLE



LEFT: A very graceful hand-forged iron stair railing curves its way up to the upper landing. In partial view also is a rare collection of circa 1714 large folio copperplate engravings of water towers from a series of planned designs for a German palace. A custom zebra skin ottoman sits beneath a framed antique Malabaricus flora engraving.

OPPOSITE PAGE: An 18th century Chinese altar table sits below a Robert Russell contemporary painting. The seating area at the top of the stairs displays a Poltrona Frau leather tufted sofa and a pair of complementary tea tables in platinum leaf finish by Donghia.







ABOVE: *An sunny master bathroom provides his and her basins with custom Swanson-Ollis mirrors with attached sconces. For privacy, remotely controlled translucent shades have been subtly installed. Marble floors are heated. OPPOSITE PAGE: J. Robert Scott wool sheer draperies frame an iron sleigh bed appointed with Anichini bed linens. Donghia side tables and lamps flank each side. In the foreground is seating area comprised of a custom J. Robert Scott sectional sofa upholstered in a boucle fabric. Mohair pillows accent and contrast. A J. Robert Scott leather ottoman serves as a functional coffee table and foot rest. A collection of framed nature print ferns is also shown.*



A high-school aged daughter's bedroom is not only stylish and sophisticated, it is also very functional. At the foot of a custom upholstered bed sits an ottoman with faux leather applications and trim. A Dessin Fournir dresser flanks the bed. All fabrics were selected for their resiliency yet style and design were ever present in mind.



This guest bedroom definitely pays homage to the home's commitment to balanced eclecticism. Above a custom Swanson-Ollis upholstered bed is a collection of four Charles Fradin framed convex nautical mirrors. A pair of J. Robert Scott chairs flank an antique Chinese cabinet. A Dessin Fournir side table and silver lamp are also shown.



TRANSITIONAL STYLE

LEFT: This upstairs screened porch provides a private setting for reading or relaxing at the end of a long day. Comfortable David Sutherland teak furniture upholstered in Perennials outdoor fabric is accompanied by a collection of three Holly Hunt Ltd. sculptured tree trunk tables.

OPPOSITE PAGE: A tiered patio with bluestone flooring provides the setting for many outside gatherings. Michael Taylor teak furniture is the focal point. Of note, copper mesh framed in dark brown wood protects a pair of upper and lower screened porches. The lower porch opens off the breakfast room while the upper porch is accessible from the upper stair landing and master bedroom. A Paul Ferrante iron lantern also accessorizes the patio and gives warm subtle lighting at evening time.





URBAN CHIC CONDOMINIUM

SOFT CONTEMPORARY



URBAN CHIC: *AN ART COLLECTOR'S HAVEN*





SOFT CONTEMPORARY

This project had always been about passion, specifically a passion for art. Yet this passion had to be tempered with an overriding proclivity for comfort, functionality and privacy. To some, this might have been a daunting challenge. However we

were pleased to take the commission, knowing that our experience had always been pleasurable when working with people who possessed an incredible knowledge about good design while also having a wonder sense of personal style and sensitivity to life in general. This project would prove to be no different.

Our objective was to renovate our client's small three bed-

room condo in the city into an urban oasis and sanctuary of sorts. As our client had been a very patient and thoughtful art collector over the years, this residence would become the setting for works by the likes of Frank Stella, Jasper Johns, and Thomas Hart Benton—among numerous other notable artists. But the pressing task at hand was to give a sense of space and proportion to a small mid-century condominium, to redesign with art in mind, to give proper attention to all details with the most current of appointments, and to simply make the overall feel one of understated comfort and elegance.

warmers. To give a subtle backdrop to the art and furnishings, ne enters to see hand-planed, chevron-patterned hard wood floors finished in a custom oatmeal stain and glaze. The walls of the living room, dining room and entry exude sophistication due to the application of rich ivory silk. And likewise, the walls of the master suite were upholstered in an oatmeal-colored slubby silk reminiscent of a wonderful men's suiting material. The floors there are quiet corduroy-textured wool of the same color. A J. Robert Scott bed upholstered in a grid of smoky topaz kidskin is complemented by a lounge chair and ottoman

We began by redesigning the former three bedrooms into a master suite complete with dressing room, and creating a luxurious media room and library. As a means of deceiving the eye and giving a larger sense of volume, all door casings were raised to the maximum ceiling height, beautiful crown molding was installed, and even baseboards were exaggerated and used to house all electrical outlets. Bathrooms were fully brought up to modern standards with heated marble floors and towel

in the same leather, a pair of antique Chinese side tables and a framed antique Chinese ancestral. The same color theme follows to the media room with classically designed cabinetry and paneling finished in a remarkable driftwood finish. Silk mohair pillows trimmed in kidskin leather sit atop a comfortable sectional upholstered in a silk chenille fabric—all J. Robert Scott. A large leather ottoman/coffee table and set of leather and steel nesting tables give additional presence. The



A large oil on canvas painting of an American street scene from the early part of the last century is by renowned artist John Baeder. A bronze sculpture by artist Rita Blitt is shown in the lower right corner.



A sculpture's custom bronze and glass table centers this artful living room. Pillows of Jim Thompson silk ikat design accent a custom sofa and lounge chairs upholstered in J. Robert Scott ivory silk tapis fabric.





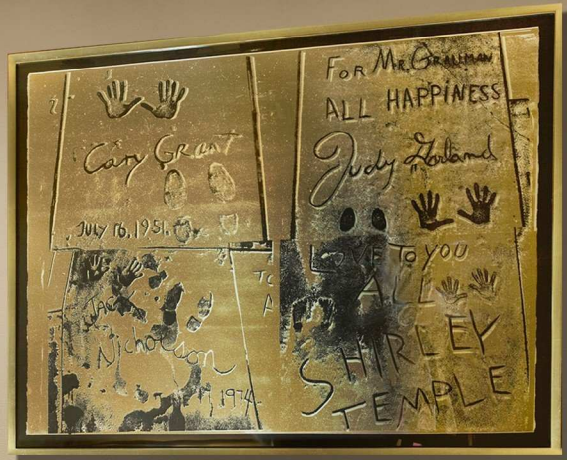
Artwork by Frank Stella hanging centered on the mirrored wall has commanding presence in this sleek aluminum and frosted glass galley kitchen. A significant raku pottery bowl is also shown as it sits peacefully on the honed, pale beige and grey granite counter surface. The backsplash wall surface is fabricated of frosted glass.





SOFT CONTEMPORARY

This room multi-tasks as a combination media room, den and library. Therefore, furnishings designed for this space were created with comfort and serenity in mind. A lush J. Robert Scott custom sectional sofa was specified with luxurious silk chenille fabric. Accent pillows are constructed of silk mohair, trimmed with flanges of soft, supple kidskin leather. A custom J. Robert Scott oversized leather ottoman serves as a coffee table and occasional foot rest. A trio of J. Robert Scott nesting tables of brushed aluminum and leather calmly anchors one end of the sofa. The room's floor covering is handsome ribbed corduroy wool. Softly treating the windows are Roman shades of silk tapis fabric. The contemporary leanings of this room are softened by the classically designed wood paneling. A beautiful driftwood-like paint finish has been expertly applied.



SOFT CONTEMPORARY

Formerly comprised of two small bedrooms, this master suite now boasts of a larger bedroom with an ample dressing room and closet. Upon initial viewing, a sleek J. Robert Scott Le Ronde bed strikes a restful yet artful pose. Constructed of grids of soft kidskin leather, it is completed by a nest of silk tapis pillows which sit atop soft yet tailored Anichini bed linens. Above the bed hangs an Andy Warhol original composition depicting handprints, signatures and greetings of the likes of Shirley Temple, Judy Garland and Cary Grant. To the side of the bed are a pair of 19th century antique Chinese low cabinets and Hinson nickel-plated swing-arm sconces. Also within sight is a framed painting by another famed American artist Thomas Hart Benton. However not within view is a comfortable J. Robert Scott lounge chair upholstered in the same kidskin leather. The walls, although very monochromatic, are covered in a slubby J. Robert Scott silk.



SOFT CONTEMPORARY

A museum quality Chinese ancestral and 19th century antique Chinese wood slat bench comprise the adornments of this sleek dressing room. The doors and walls have been covered and wrapped in the same J. Robert Scott slubby silk fabric as the master bedroom. Completing this sophisticated space are polished nickel Dornbracht door handles and hidden hinges.



living room and dining room are a veritable oasis for art. Vintage Dunbar lounge chairs and sofa are upholstered in an ivory silk to accentuate the walls and draperies, and a pair of remarkable Art Deco dining chairs upholstered in Clarence House velvet dragonfly fabric are noted against a large John Clem Clarke dramatic canvas. The living and private areas are bisected by a sleek galley kitchen in aluminum clad cabinetry with honed granite surfaces. This kitchen provides a perfect transition point for this gem of an urban chic residence.





CALIFORNIA SPANISH



400



*Classic
California Spanish
Residence*

Hancock Park

Los Angeles

built 1926



CALIFORNIA SPANISH

OPPOSITE PAGE: The residence's graceful entry foyer has the power to transport its guests back to the 1920's when Spanish inspired homes like this were becoming the signature style of Southern California. Remarkably restored, note the original terra cotta paver floor tiles, decorative tiles on the stair risers as well as the artfully hand-forged iron stair railing. The tiles' dolphin motif has also been replicated within two arched vignettes on the upper landing. Upon entering, a first view is of the pleasant patio and garden setting outside, but the eye immediately notices the collection of antiques prints depicting Paris, circa 1739. A Gregorius Pineo table is shown beneath classic Paul Ferrante iron lantern. RIGHT: A Swanson-Ollis Annette console in aged ivory with white gold leaf accents is accompanied by a John Ilg charcoal on paper nude.



SPANISH GEM IN HANCOCK PARK

Constructed in 1926, this perfect example of a California Spanish style residence personifies Hancock Park, one of Los Angeles' premier older neighborhoods. It is quintessential Los Angelino, harking back to a more elegant era due in great part to its markedly Spanish design elements. Yet, this home still exudes a totally current and gracious presence in this faster paced time.

There are so many understated embellishments which create both balance and intrigue in this residence. Situated on a quiet corner lot, this home with its L-shaped layout and tall exterior stucco walls sits gently higher than most surrounding homes nearby. This alone confidently gives forth a more commanding street presence. One approaches the home between an aromatic stand of lavenders and two oversized terra cotta pots filled with yet

more lavenders and tall olive trees. And then, upon reaching the recessed front door area guarded by decorative iron gates and outlined in large multi-colored Spanish ceramic tiles, a very Mediterranean mood is immediately set. This experience is even more dramatic at night when the glow of subtly placed lighting beneath the olive trees washes softly against the home's facade.

The initial view into the home's entry foyer gives a sense of being transported into a very private world in which the urgent cares of this large city are temporarily forgotten. One notices a perfect vista to an inviting tree-shrouded patio and nicely landscaped yard. But it is the sight of a traditional and elegant staircase that suddenly emphasizes a glimpse of a statelier era as the eye gently follows the wrought iron railing to the second floor landing. No detail is missed, as each stair riser features a somewhat nautical and mythical motif in the ceramic tiles. This motif is further duplicated in the two alcoves flanking the large arched window centered on the landing. And although the

overriding style of the home is decidedly California Spanish, this home begins to delight its guests with its collection of eclectically chosen appointments. However, there is never the sense of betrayal to the home's original design intention. One is witness to a very smooth and balanced mix of French, Spanish, Italian, English and even clean-lined Asian pieces which permeates these interiors. The bones of this classically inspired residence simply provide the backdrop for this entertaining canvas.

Unmistakably attractive is a set of antique maps, which comprise Paris circa 1739, featured in the entry hall. Further, entering the spacious living room with its obviously Spanish details, one will notice a collection of pieces, antique and reproduction, which comfortably span the offerings of many periods and styles. The eye gently registers a calm and inviting balance. And beneath the dark hand-carved Spanish wood beams, there is only the sense that these acquisitions were ultimately destined to accompany one another. Private seating







The home's living room features a mixture styles and periods of furnishings which never betray the residence's Spanish architecture. Soft Swanson-Ollis Santa Barbara sofas and loveseats upholstered in J. Robert Scott velvet fabric create separate seating areas. A decoratively carved English table centers this room whose windows are framed by Clarence House silk draperies on hand-forged iron rods. Antique Chinese benches, two with leather inset tops, serve as coffee tables. Also of note are a pair of Swanson-Ollis corner consoles with marble tops which flank both arched patio doors. A wonderful collection of framed circa 1678 engravings of flora from the Malabar Islands are dispersed throughout the space, most notably flanking a large French inspired antique reproduction mirror. Four brown silk S~O Montecito lounge chairs are shown on opposite page.



CALIFORNIA SPANISH

A hand-planed and hand-waxed Dessin Fournir dining table beneath a two-tiered, gold leaf Paul Ferrante chandelier creates the focal point of this dining room. Custom Venetian nautical canvases surround the room, outlined in grosgrain ribbon and brass nailheads. An 18th century Italian marble console displays a pair of antique French mercury glass orbs, a pair of English 19th century inlaid wood and ivory knife urns and an antique English ribbed-wood writing box. A faux ivory and black lacquer lamp completes the staging.

CALIFORNIA SPANISH

Alternately positioned around the dining table are custom Swanson-Ollis chairs upholstered in either dark chocolate silk tapis fabric or natural Madagascar straw cloth. Prominently hanging at the right is a large 18th century French carved wood gilt frame with a pair of antique split mirrors. Partially viewed is an exquisite 19th century French buffet with subtle ivory and black inlaid insignias and burl wood door insets. The walnut top is beautifully planed and hand-waxed. Atop the buffet is a custom Swanson-Ollis painted ivory and black neoclassical lamp.





areas are separated by an intricately carved English center table facing a traditional Spanish fireplace. Richly upholstered arm chairs and velvet sofas surround antique Chinese tables. All this is complemented by a collection of antique botanical prints, an oil painting from one of the schools of the masters, and intricately carved antique wooden brackets.

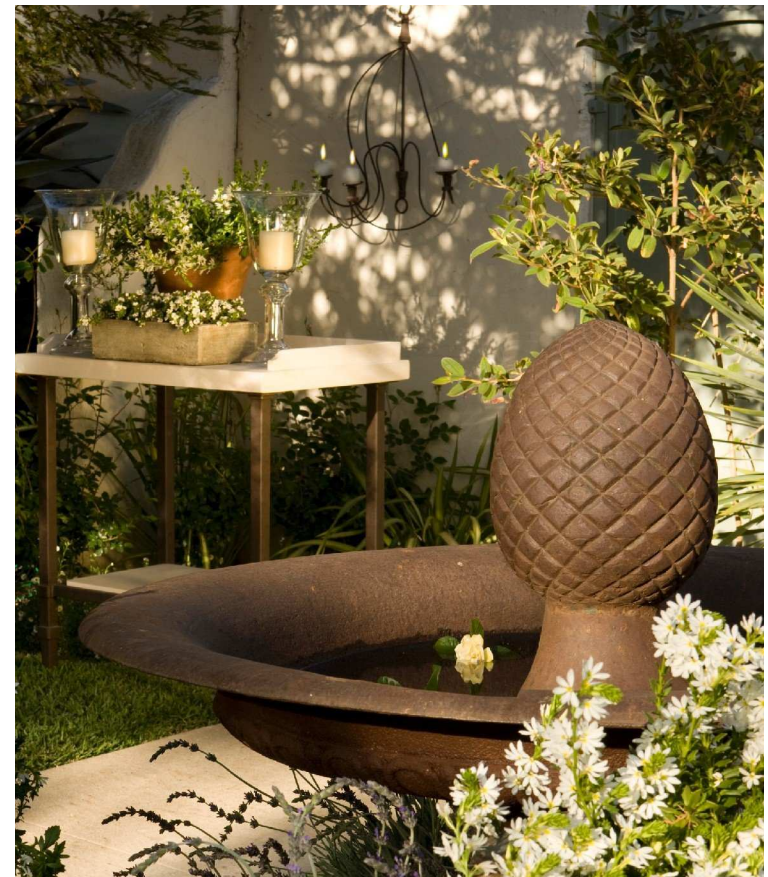
provide the setting for many formal and impromptu dinners. One can only conjure the many images of beautiful evenings with friends gathered around the glass and mirror dining table, awash in the soft glow of candle light at this lovely California Spanish home.

The dining room is both whimsical and classical. The walls entertain the eyes with a collection of Italian nautical images which envelope a beautiful hand-planed round dining table and its alternating chairs of silk and raffia. And the master bedroom best exemplifies the home's transitional message. Custom hand-painted silk walls in an Asian motif provide the background for another successful interior staging. An artfully designed bed upholstered in silk mohair sits between two vintage European reproduction chests, all of which complete this restful scene. But arguably the most desirable part of this residence offers months of gracious entertaining. Easily accessed by the lower rooms, the large patio and gardens

OPPOSITE PAGE: A commissioned oil on canvas by Kansas City artist Gary Head depicting a Nantucket yellow cottage warmly sets the tone for this charming breakfast room. Woven black and tan leather chairs surround a custom Therien & Co. cast stone and glass table. A round iron and parchment Paul Ferrante light fixture is shown centered atop.



Very few homes can boast of rooms which feature walls of paper-backed silk wall covering which are artfully painted with a continuous non-repetitive scene. London-based Fromental supplied this sumptuous palette of whimsical flowering trees and bushes complete with a multitude of intricately detailed song birds. A custom bed upholstered in silk mohair with bedding of white, chartreuse and copper is the obvious focal point. To both sides are Swanson-Ollis Richard and Chaumont dressers, each with an S~O Wheaton carrera marble lamp and silver leaf shade. A J. Robert Scott Portuguese arm chair with chinoiserie details is partially viewed. A pair of Swanson-Ollis Urbino ottomans is positioned at the foot of the bed and are upholstered in dark brown pony hide and trimmed in kidskin welt cording. Softening this setting is a large, custom wool loop rug.





One of the many charming aspects of this home is its very private guest bedroom which is intimately situated at treetop level overlooking the patio and garden below. Relaxing in the custom Swanson-Ollis bed with its upholstered headboard of Ola World Weavers taffeta silk stripe fabric, sumptuous down pillow top mattress and Pratesi linens is always a fitting end to a beautiful day. Above the bed is a striking collection of antique Piranesi prints of architectural decorations for an 18th century Italian villa. Beneath the window is a Swanson-Ollis Lys de Mer console in an aged and distressed wood finish and a Swanson-Ollis Clermont lounge chair (in partial view) which is upholstered in a washed, relaxed heavy linen and accented with leather and nailhead armrests. A large vintage wool dhurrie rug in ethnic designs of greens, golds, and rusts sets a pleasant foundation for the room.





The home's privately walled patio and backyard are easily accessed from the living room, entry and breakfast room. Indirect lighting along the garden's perimeter and from the overhanging tree creates a subtle ambiance for almost yearlong outdoor entertaining. David Sutherland teak furniture and a Paul Ferrante reproduction star lantern over a glass dining table provide a most comfortable setting. All cushions and drapery panels are of Perennials fabrics.

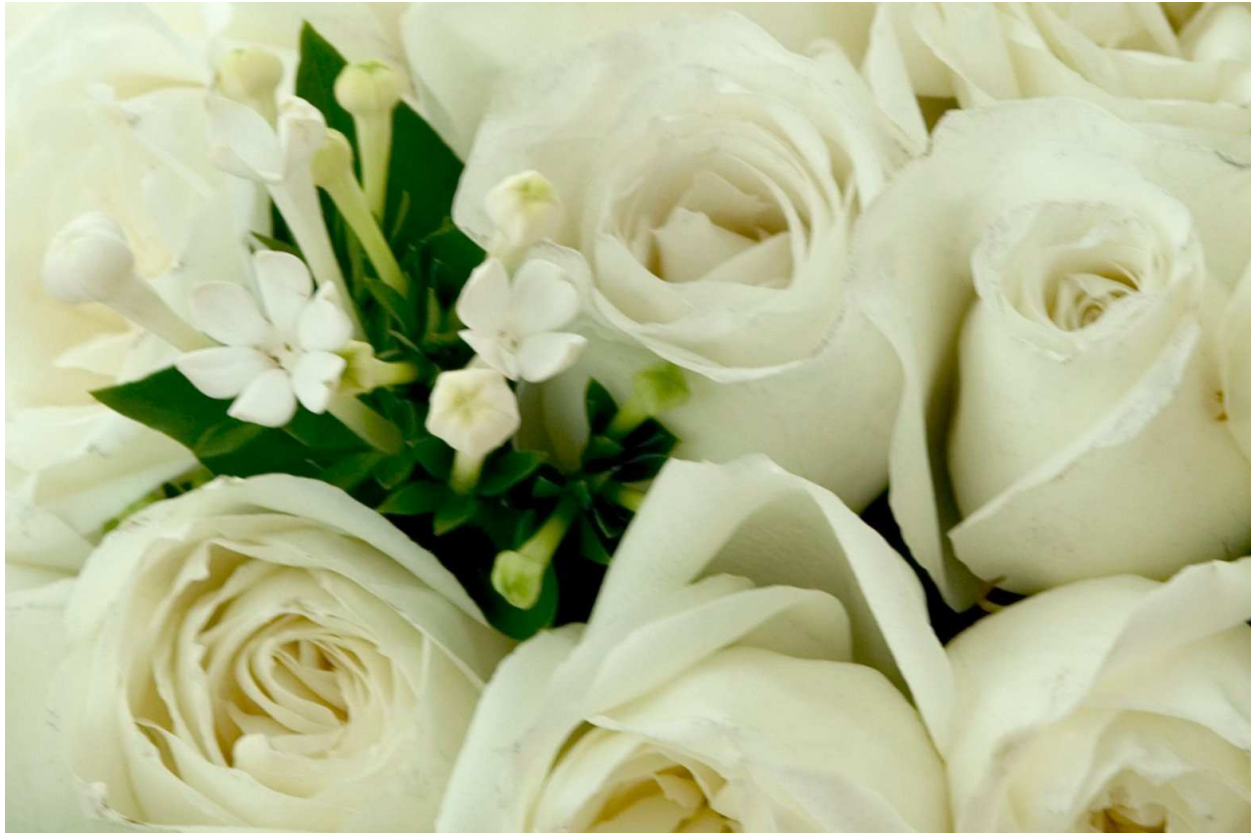






OPPOSITE PAGE: David Sutherland teak furniture with cushions upholstered in Perennials outdoor fabrics set the stage. A table created of a dark chocolate metal drum base is completed with a round glass top with a concentric mirrored center--beautiful for illuminating votive candles at dark. Directly overhead is a Paul Ferrante iron and glass star lantern. As a matter of drama, draperies of Perennials fabric frame the picture window and doors to the living room.

ABOVE: Enhancing the lush back gardens are an antique French iron birdbath, an antique decorative birdcage, a custom-designed iron and limestone console, a pair of antique French iron flower stands and a perfectly posed Black Labrador.



BEYOND INTERIOR DESIGN

A LEGACY OF STYLE
CALIFORNIA SPANISH RESIDENCE



Sheer drapery panels provide a sense of mystery and intrigue. After all guests had arrived for signature cocktails, canapes and Moroccan music, the sheers were slowly parted to reveal the gala's beautiful setting.



Attention to detail is the foremost motto of any successful social event. Colorful invitations in orange, chartreuse green and Moroccan red were engraved to announce this party's Marrakesh theme. Jewel-studded placards with beautiful calligraphy accompanied each guest's place setting.



The event planner, also a gifted florist and chef, created table settings of colorful roses and orchids as well as arrangements in the host's white and green preference. As guests departed, Moroccan-inspired gifts were elegantly marked for all guests as mementos of the night's elegant affair.

Small silver vases of lavender orchids flank a center arrangement in white. Each long table was elegantly set with silver and bone flatware aside gold and silver rimmed china and glass chargers. Each table was adorned in an underlayment of pink silk covered by patterned sheer silk organza.



A STATEMENT OF STYLE

Style is said to be a distinctive manner of personal expression. It is definitely not something to which one is readily born, however there are those among us who seem to live life with a certain element of ease, grace and beauty. It is to these specific people that we gravitate and to whom we hope to emulate in some small way.

We believe that arriving to a point of true style is not an ethereal or unattainable process, but rather a lifelong unfolding experience. It seems to be an honest manner of developing courtesy and kind consideration, charm, generosity of spirit, and even a bit of fashionable elegance.

Our world as interior designers is forever intertwined in this same process. Surely for our clients, not only are we aspiring to create the most beautiful living environments that reflects their personal loves, we also are attempting to create the most perfect canvas upon which dreams are achieved.

Please enjoy this section of our book. It is a short glimpse into a very special and magical evening at this California Spanish residence in Hancock Park. It is a private and alluring view of what is possible beyond interior design.

Subtle touches sometimes provide the most elegant effects. As a special treat, only a discerning guest would know of the host's heirloom bone and sterling flatware used. Also, additional decorative Moroccan-inspired candles were artfully wrapped and awaited each guest as a lovely parting favor.



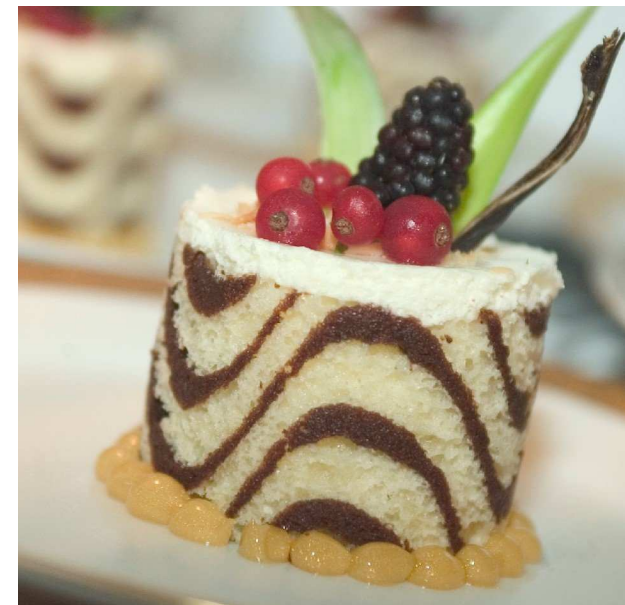
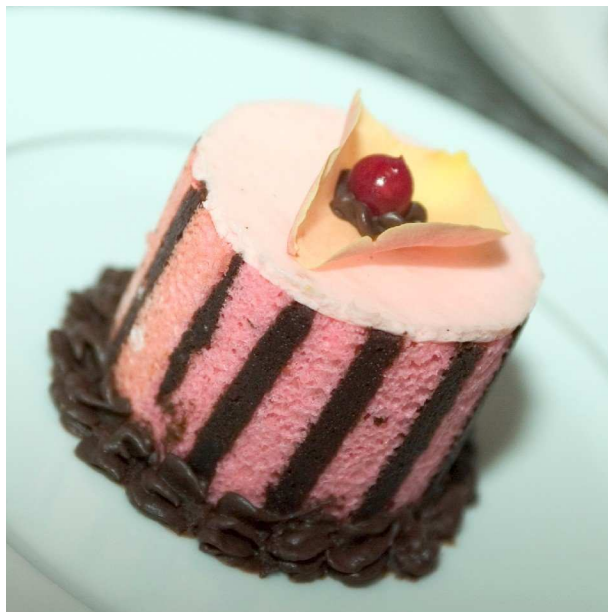












Visually decadent and delicious desserts were the perfect finale to a masterfully prepared authentic Moroccan meal. Also, not hurtful to any eye was the staff of "modelesque" servers sporting very tailored white collarless jackets and shirts with black slacks who presented this ending course as thousands of multi-colored rose petals fell from the skies. Of course, this only announced the commencement of more live music and dancing under the stars!



This Marrakesh evening was not complete without authentic Moroccan music and entertainment. Between food courses, performances by musicians and belly dancers captivated an already festive crowd.



PERIOD FRENCH REGENCY



PERIOD FRENCH REGENCY

A collection of rare 18th century neoclassical figurative etchings of mythical Greek gods and goddesses adorn the upper staircase. An antique inlaid veneer Louis XVI commode is flanked by a pair of very fine 18th century fauteuils in silk damask. Of note also is centuries old three-perspective painting of a French fall landscape. A custom hand-forged iron railing with gold leaf details which ascends the staircase was inspired by and interpreted from a study of ironwork of vintage French villas. Partially shown is an elegant Aubusson rug in muted tones.

PERIOD FRENCH REGENCY

Shown as if intentionally hanging within an intricately carved gilt wood antique mirror frame, a lovely multi-tiered crystal and gold dore chandelier sets a sophisticated tone. Below, a perfectly crafted antique carrera mantle, one of a pair acquired from a vintage Parisian estate, anchors this vignette. A pair of Louis XV style gold and black dore figurative candlesticks flanks an equally impressive antique clock. An identical pair of antique gold dore fire screens provides protective adornment in front of the shared firebox and chimney separating the residence's living room and study.



Period French Regency Penthouse

One would never know upon viewing this richly appointed penthouse that we and our clients started with a completely blank palette. What would end as a beautifully executed residence began as bare concrete floors and walls with no physical access to its second floor spaces other than by ladder. However, designing such a space posed no obstacle for Hal Swanson, who in addition to being a gifted interior designer is also an accomplished interior architect. So in many ways, this project would become our idea of a dream job in which success would be determined by the subtle and artful complement of its interior design and precise interior architecture.

Our clients had recently married and desired a residence with privacy, ease of access to local services, and a home with a grand presence and exquisite vista. It can be arguably stated

everything was achieved with the purchase of this space. Situated on the top eighteenth and nineteenth floors of this luxury tower, privacy for this couple would never be an issue. The expansive southern views over a large city park and its surrounding refined neighborhoods would always be unobstructed. And furthermore, because of the building's access to the adjacent Ritz Carlton Hotel, the complete array of luxury services available to the hotel's discerning guests would also be available at a moment's notice. Very few residences can boast of such options.

During initial discussions, it was apparent that both clients possessed a true love and appreciation of antiques. This and a shared love of France would become the basis for this home's decidedly Period French Regency inclinations.

From an interior architectural perspective, the building's architectural designers provided a recess under each floor which allowed total flexibility for the placement of all mechanical, plumbing and electrical systems. This gave us the freedom to





PERIOD FRENCH REGENCY

A charming 18th century neoclassical style oil painting of two children herding sheep is displayed in its original carved wood gilt frame and seems to come alive in the room. It sits above a 19th century Dutch sideboard with hand-painted Grecian figures, adorned with a pair of Sevres urn candlesticks, sterling servers and a decorative sterling raised tray with handles. Randolph & Hein Neoclassical dining chairs surround an antique reproduction table by Smith & Watson. A table setting of antique gold-rimmed Louis crystal and porcelain china surrounds an antique mirrored plateau and cobalt and gold dore Sevres soup tourine.





PERIOD FRENCH REGENCY

A pair of Brunschwig & Fils lounge chairs is shown upholstered in a very fine Brunschwig & Fils silk lampas fabric and tassel trim. In the foreground is a coffee table interpreted from a set of three antique reproduction plateaus finished in aged nickel with antiqued mirror tops by Erika Brunson.

PERIOD FRENCH REGENCY

A very rare 18th century three-perspective oil painting of a French fall landscape in a carved wood gilt frame hangs atop an antique Louis XVI style inlaid wood veneer commode with gold dore ormolu. A collection of antique cut crystal boxes completes this vignette.





PERIOD FRENCH REGENCY

A very warm yet formal tone is immediately set upon entering this high rise residence. A rich glow reflects from the vaulted and masterfully gold leafed ceiling. Walls custom painted to replicate limestone cladding create the canvas for this room's adornments. A very fine Louis XVI style Vernis Martin cabinet, circa 1880, with original Breche D'Alet marble top is presented below an 18th century carved wood gilt Italian mirror with putties. Flanking the cabinet and mirror are a pair of Randolph & Hein antique reproduction neoclassical side chairs.





An 18th century French landscape painting hangs above a magnificent museum quality 18th century painted and gilt Louis XV style console. A pair of reproduction chairs upholstered in Old World Weavers fabrics are positioned at each side.

design a completely custom residence for our clients without the usual adherence to the parameters of repetitive floor plan standards that are required of most condominium buildings. Additionally, with access to the roof of the building, we were able to construct wood-burning fireplaces. In regard to another important element in the initial layout of the space, a decision was made to create an open staircase in lieu of a more focal, spiral design. From a small photo of decorations from a study of a vintage chateau, we designed the present hand-forged iron railings which gracefully ascend the staircase and upper balcony leading to the guest and master suites.

We soon descended upon New Orleans, still one of the few American cities with exceptional French antique dealers. During our first visit, three antique marble mantels were found, all with interesting provenance. One in particular, the family room's dark coffee-colored marble mantel with caramel and subtly iridescent gold veining, was from a noted Dijon chateau. The living room and master bedroom mantels of white carrera marble are companion pieces from a former Parisian estate. Subsequent trips would soon yield a perfect balance of antiques which comfortably embellish the residence. Upon perusal of the photos displayed, one will notice a pair of antique Louis XV benches and fauteuils in the living room, Sevres urns, gilded

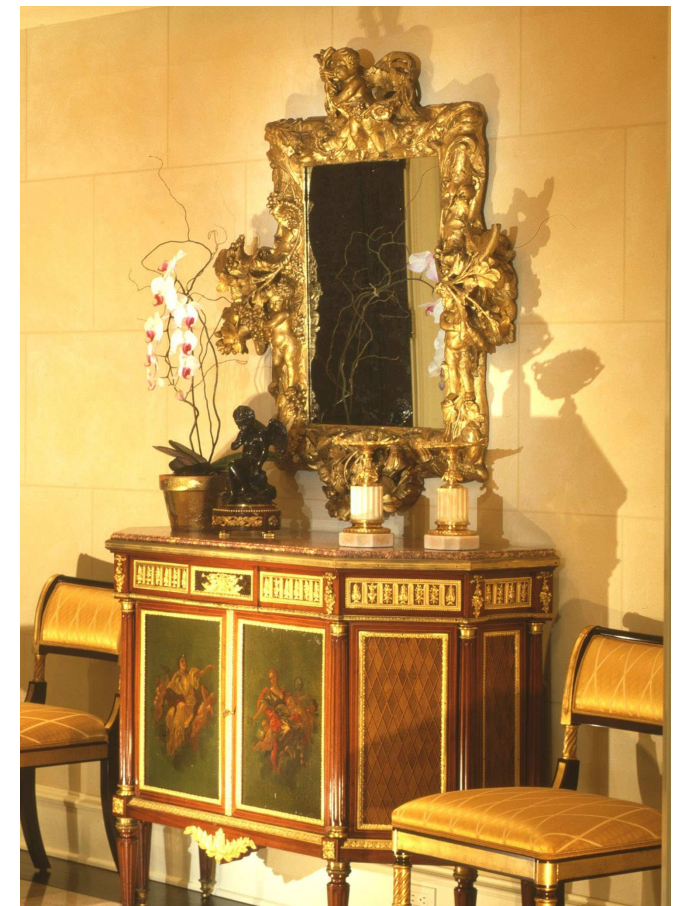


An exquisite 19th century marble bust of Caesar with a very fine French cave a liqueurs create a quiet corner in the study.

PERIOD FRENCH REGENCY

cabinets with gold metal lace, onyx pedestals flanking the living room fireplace, numerous noted paintings and much more. Also, as a matter of functionality and adornment, we specified the fabrication of many furniture pieces from a short list of manufacturers which still follow centuries-old formulas and techniques in their construction and finishing processes. Exacting attention to the details of custom-crafted furniture is necessary in order to provide perfect blending with the many museum quality antique acquisitions. When properly executed, sometimes only a trained eye can discern the differences between antique and new.

One of our noted trademarks is our attention to the all surface details, inclusive of ceilings. And in this space, all floors, walls and ceiling surfaces are properly tended. Beautifully coffered ceiling details and exacting period moldings were installed throughout, and a rich, dark chocolate finish was applied to the linen-fold paneling in the family room. A subtle antique Aubusson rug sits upon dark Versailles-patterned wood floors, and serves as the palette for the living room setting. Rich fabrics and trims from the likes of J. Robert Scott, Clarence House, Scalamandre and Brunschwig & Fils are noted in the lavishly trimmed draperies and upholstery, as well as on the upholstered walls of the master bedroom. The guest bedroom



exhibits a celadon and butter cream trellis pattern wall covering which was resurrected from the archives of Brunschwig & Fils, while the artistry of custom paint applications adorn the walls of the kitchen and the entry with its gently rolled ceiling detail All-in-all, one can confidently say that this penthouse and its rich interior design afford our clients the proverbial “high life” in the sky!

Descending the staircase, one almost always has a birdseye view of the city's urban landscape yet also a most comforting vista across a large manicured and rolling park.





PERIOD FRENCH REGENCY

RIGHT: An 18th century landscape in a carved wood gilt frame hangs above a very fine 18th century Louis XV style marble mantle that was acquired from a Dijon region estate. In the background is exquisite 19th century black lacquer cabinet with gold metal lace overlay. Nestled above is a decoratively carved Louis XVI style antique gold leaf mirror.

OPPOSITE PAGE: A pair of 18th century landscapes hangs serenely on dark chocolate linen-fold paneled walls. This cozy room is richly appointed with a complementary Brunschwig & Fils sofa and lounge chair upholstered in luxurious Pollack striped velvet fabric. A pair of John Boone tables and a pair of J. Robert Scott kidskin lounge chairs complete this comfortable sitting area. As an added attraction to this room, guests can gather for late night drinks or a game of cards. The collection of neoclassical chairs are by Randolph & Hein and the lacquered wood stained table is by Smith & Watson.





PERIOD FRENCH REGENCY

OPPOSITE PAGE: *A two-piece 18th century walnut chaise brisee in Louis XV style upholstered in Brunschwig & Fils silk damask fabric with antique Aubusson pillows is shown in the foreground of this richly appointed master bedroom. A collection of four 18th century landscape paintings is displayed against upholstered walls of Clarence House silk. The custom Swanson-Ollis bed is crafted in Old World Weavers silk lampas. A custom Patterson, Flynn & Martin needlepoint wool carpet provides the room's foundation.*

RIGHT: *As previously mentioned, this beautifully carved carrera mantle from a vintage Parisian estate is the companion piece to the elegant living room mantle. This mantle serves as a perfect setting for a pair of 19th century porcelain and gold dore bronze urns. Above hangs yet another 18th century French landscape oil on canvas.*





ABOVE: Classically designed pilasters with gold leaf accent this bathroom of butter cream marble and verde marble insets. All hardware is by Sherle Wagner. Reproduction gold dore bronze candelabra with 3/4-round parchment and gold leaf shades provide ambient lighting and decoration. OPPOSITE PAGE: Setting the canvas for the room is an archival Brunschwig & Fils trellis pattern. Exquisitely appointed, this guest room features an 18th century French painting inspired by aspects of commerce, an 18th century carved relief panel above the bed, and a pair of Sevres urn lamps with pleated silk shades, a Quatrain reproduction bench and reproduction Brunschwig & Fils lounge chairs.





PERIOD FRENCH REGENCY

A very fine 18th century oil on canvas which depicts a woman and child by window is featured on the kitchen wall. Above hangs a neoclassical style chandelier with black and gold dore bronze decorative accents.





MUSEUM CONTEMPORARY





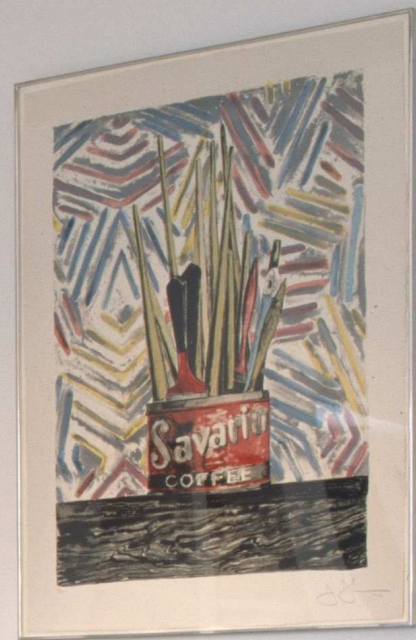


MUSEUM CONTEMPORARY

Our client had become a very serious collector of world class works of art by noted international artists, and sought to create a home and gallery in which daily functional living would coexist and even complement the other effortlessly. And the task of exhibiting works by the likes of artists Mark Rothko, Robert Rauschenberg, Jim Dyne, Jasper Johns, Helen Frankenthaler, Frank Stella, ceramicist Viola Frye and sculptor Magdalena Abakanowicz required a very high sensitivity in order that the art would always remain the primary focus.

We chose to create a crisp, tailored interior as a simple canvas for the art. Sleek and sophisticated furniture like a segmented, leather sofa by de Sede and innovative lounge chairs in the living room would become artful players as well. And even architectural elements like the stainless steel barrel vault entry gallery further served this cause.

Within the ample confines of this contemporary residential masterpiece, one hopefully finds a simple reverence to the confluence of art, architecture and design.







MUSEUM CONTEMPORARY

PAGE 116: Polish sculptor Magdalena Abakanowicz' human figures impart a very serene mood to this artistically inspired home. Many world class artist's works are presented within these walls. Even the furniture has an artful presence.

PAGE 117: A pair of silk screens by noted artist Robert Rauschenberg grace this residence's dining room walls. The room's collection of three custom dining tables can also be arranged as one continuous long table.

RIGHT: The living room's setting features artistically inspired furniture in this curved leather example by de Sede.

OPPOSITE PAGE: A large Viola Frye ceramic sculpture greets all who enter the kitchen.





A large stainless steel and black granite kitchen features a set of four Italian red leather counter stools. Partially in view from the dining room is a remarkable framed Robert Rauschenberg silk screen.



A circular office alcove separates the kitchen from the living areas. Partially shown to the right in this photo is a large Viola Frye ceramic sculpture. This work of art is in center view on the preceding page.



CLASSICAL PENTHOUSE



A warm tone of coral, butter cream and celadon greets visitors to this luxury penthouse. Entry walls of unexpected coral horsehair provide a perfect backdrop for a Maurice Prendergast watercolor (left) "A View of the Park, Gloucester" and a Felix Ziem oil painting (right) "View on the Palazzo Ducale and the Molo in Venice". Further inspection notes a pair of Hans Hoffman abstracts in the living room (partially in view) which give a surprising yet balanced infusion of contemporary art to this predominately classical space.

CLASSICAL PENTHOUSE

WITH
CONTEMPORARY ACCENTS

There are some stories that are so full of charm and grace that they naturally have a certain poetic quality. Such is our client's story, and our experience in the design of this penthouse. Our goal was to achieve a beautiful visual rhythm throughout, one that would hopefully speak wonders about the many loves and interests of our dear friend. We had the pleasure of beginning this project with a relatively clean slate from a design perspective. There would be numerous family mementos retained from the former estate, which of course would become those inexplicable elements that give depth and meaning to any home. Our client simply instructed that she desired a casual and sophisticated environment, yet one also adequately private and warm--no small order, but one that we eagerly undertook. Originally directed to work with a







CLASSICAL STYLE

predominantly coral and peach background, we decided to enhance this palette with celadon, yellow, and rust accents. A trio of antique Oushak rugs were initially chosen for the living room and den, thus setting this rich tone. And in the end, another exquisite antique rug was added in the dining room as a final harmonious statement.

We knew from the start that art would be a primary focus, so we chose sumptuous fabrics and textures upon which to set the stage. The entry foyer exhibits walls of coral and cream horsehair fabric which provide the backdrop for two works by Maurice Prendergast and Felix Ziem. From this point beneath the arched ceiling and its custom trompe l'oeil design, the sight of a pair of Hans Hoffman abstracts can be glimpsed. Artfully

selected, these Hoffmans add an unexpected modern embellishment and a certain hint of our client's expansive artistic inclinations. This is just the beginning of this penthouse's visual feast.

The living room and its adjoining solarium feature numerous

cozy seating groups. Walls of rich coral silk fabric and gimp trim create a rich ambience. One can view soft, inviting furniture upholstered in rich woven silk lampas and damask fabrics, all exquisitely trimmed with exacting cord and fringe details. There is beautiful balance here, one in which museum quality antiques and paintings coexist comfortably with a collection of exacting reproduction pieces. Of special importance, a portrait by Peter Paul Reubens hangs above the marble fireplace, casting its somber sight upon the opposing pair of contemporary Hoffmans. Depending on the time of day and direction of light, this room seems to quietly change moods, but always offers an intimate view of large outside terraces and city vistas.

A perfect residence for entertaining, intimate dinners can be served in the home's luxurious dining room or adjoining terrace. In this relatively small room, a sense of volume was achieved by installing panels of mirrors trimmed with custom wood carved gilt frames. A pair of 18th century French gold











MORNING TERRACE

David Sutherland teak furniture is shown upholstered and trimmed in Perennials outdoor fabrics. Antique accessories featured are limestone flame finials adorning the posts and a terra cotta frieze.



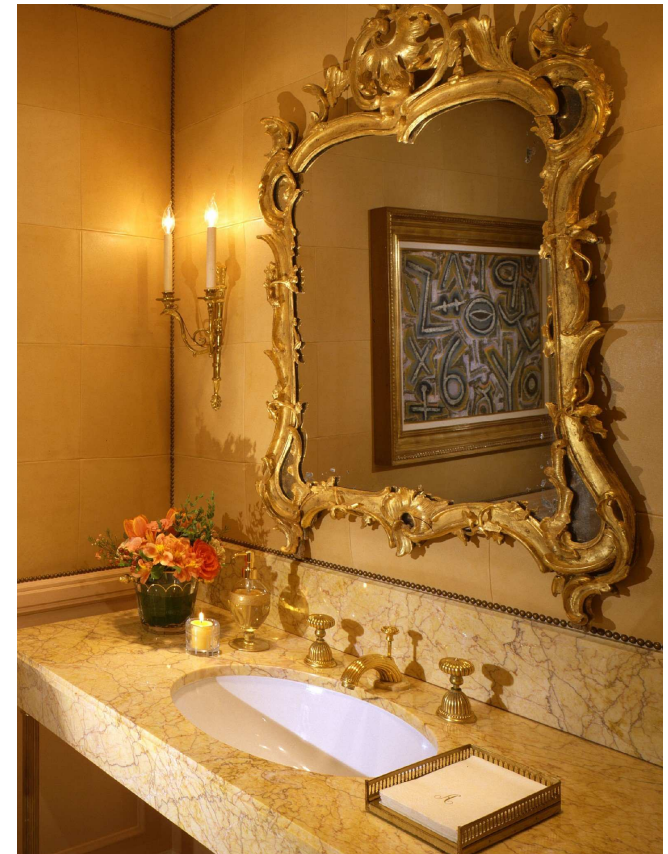


CLASSICAL STYLE

dore candelabra appear to be suspended effortlessly on the panels, and accompany a quiet 19th century Italian giltwood ampule chandelier. The Chippendale sideboard, table and chairs are family heirlooms, while an important Henri Martin oil on canvas (not shown) artfully completes the space.

As one enters the more private quarters, the library/den offers hours of casual respite. This room serves many functions. Friends can gather for a game of cards or for intimate conversations and drinks by a warm fire. Above the mantel, a custom bi-fold panel with its classic royal Chinese garden scene doubly functions as art and as housing for a flat screen television. A museum quality antique tortoise shell frame and mirror flank the opposing wall. And like most rooms of this residence, a soothing city vista can always be seen.

Very private and sumptuous, the master suite is accessed through a short hallway featuring an Adrien Marie oil on panel above an antique console. Richly stained French doors open to a warm and soothing view of coral silk walls and a floor surface of thick wool carpet. An important 18th century northern Italian armoire with chinoiserie decoration complements a custom bed in Clarence House silk fabric, softly upholstered seating pieces and a thoughtful collection of period art. Completing this suite, a grouping of mirrors framed in gilt wood hang above a custom



Dessin Fournir painted vanity in the entry to the master bath.

This meandering penthouse also has two well-appointed guest bedrooms, and an additional sunroom adjacent to the kitchen. Ever the art haven, all secondary spaces are duly addressed with art, with even the back hallways exhibiting a very rare collection antique floral engravings by Johann Weinman. However, it is the powder bath room which perfectly divulges our client's many artful interests. Here, against walls precisely upholstered in grids of supple kidskin leather, there is the perfect juxtaposition of modern influences and stately antiquities. But above all, this beautiful penthouse would never aspire to its level of grace, elegance and hospitality without the lovely presence of our very dear friend and client. This final grand element is forever ageless, and always priceless.





CLASSICAL STYLE

LEFT: A museum quality 18th century northern Italian armoire features exquisite chinoiserie decorations. Draperies are Clarence House silk bordered in tassel trim. Partially shown in the adjoining hallway is a circa 1880 oil on canvas by Belgian artist Adrien Marie.

OPPOSITE PAGE: Coral silk walls provide a warm glow for this master bedroom suite. A custom Dessin Fournir scroll leg bench sits to the end of a custom Swanson-Ollis headboard in Clarence House silk. Christopher Norman swing-arm sconces and a Dessin Fournir floor lamp give soft lighting to this room. Of particular note, an Edward Dawes painting "Autumn Birches" (above sofa) and a pointillist watercolor by Andre Lohte "Paysage" (above right side dresser) lead this room's collection of art.



CLASSICAL STYLE

A custom painted and gold leaf vanity with gold dore ormolu by Dessin Fournir is the focus beneath a collection of custom Swanson-Ollis mirrors with carved wood gilt frames. The custom painted wall treatment is a two-tone strie application.





Sherle Wagner fixtures are shown below an 18th century Italian Rococo carved and gilded mirror and gold dore candelabra. Upholstered walls in a grid pattern are constructed of J. Robert Scott vanilla kidskin and trimmed in brass nailheads and Houles gimp trim. Also shown is a circa 1950 Kenneth Noland painting.







ARTFUL
RANCHO MIRAGE
CONTEMPORARY



RANCHO MIRAGE ARTFUL CONTEMPORARY

One's life in this serene desert community can be easily touched by art on many levels, whether simply by the spectacular beauty of the natural landscape or more directly by one's proximity to the prominent offerings of numerous renowned galleries and museums. Experiencing art here rarely leaves even the casual viewer or collector without fond memories and associations, but for a few passionate people life affords a unique opportunity to create a daily life in which the art and even somehow the artist live seem to become one's private orchestra.

In this home, art never overwhelms function nor furnishings. But it does play a most magical supporting role.

RIGHT: A collection of three Martin Blank glass sculptures on pedestals appears to stretch and flex.





ABOVE: The visual feast begins almost before reaching the residence's front door. The home's private exterior entry gives almost full access to prominent works by many international artists. In view are creations by the likes of Charles Arnoldi, Dolly Moreno and Hirosho Yamana. OPPOSITE PAGE: Glass artist Bertil Vallien's imaginative presentation of human figures seems to point the Martin Blank's three graceful translucent glass sculptures in the far distance.



A pair of Bertil Vallien's glass art pieces flank the hallway which separates private suites from the home's entertaining venue.

Prominent artists, glass blowers and sculptors create a visual bounty in this living room setting. One can view a work in glass by Dale Chihuly on the coffee table and a large Robert Graham nude hanging to the right of the fireplace. As art in its won right, the room's furnishings were fabricated by J. Robert Scott. An artful French Line Tete-a-tete sofa in supple creme kidskin is shown in foreground and sits atop a custom hand-knotted carpet which imitates waves of shifting sand. A pair of Exxus side tables flank the sofa as well. Of further artistic note, one can follow the perimeter of this room starting with the Dan Daly head and torso against the window. Other artists of note follow: Michael Pavlik, Judith La Scola, Zora Palova, Pamina Traylor, John Lewis, Bertil Vallien and Ginny Ruffner.







This dining room and the adjacent bar (opposite page) display a wonderful assemblage of works by various noted international artists. Starting on the left wall above are pieces by Fletcher Benton, William Carlson, Dolly Moreno, Arman, Craig Howell, Charles Arnoldi and Hirosho Yamana. Working from left to right around the bar are art pieces by Willem de Kooning, Jose Cardiet, David Bennett, Marie Brandolini, Lino Tagliapietra, and William Morris. In the background, almost blending into the evening mountain silhouette, one will see a large Frank Stella painting, Karen La Monte kimono bronze sculpture, a remarkable collection of glass rods positioned in the form of a teepee by William Morris.







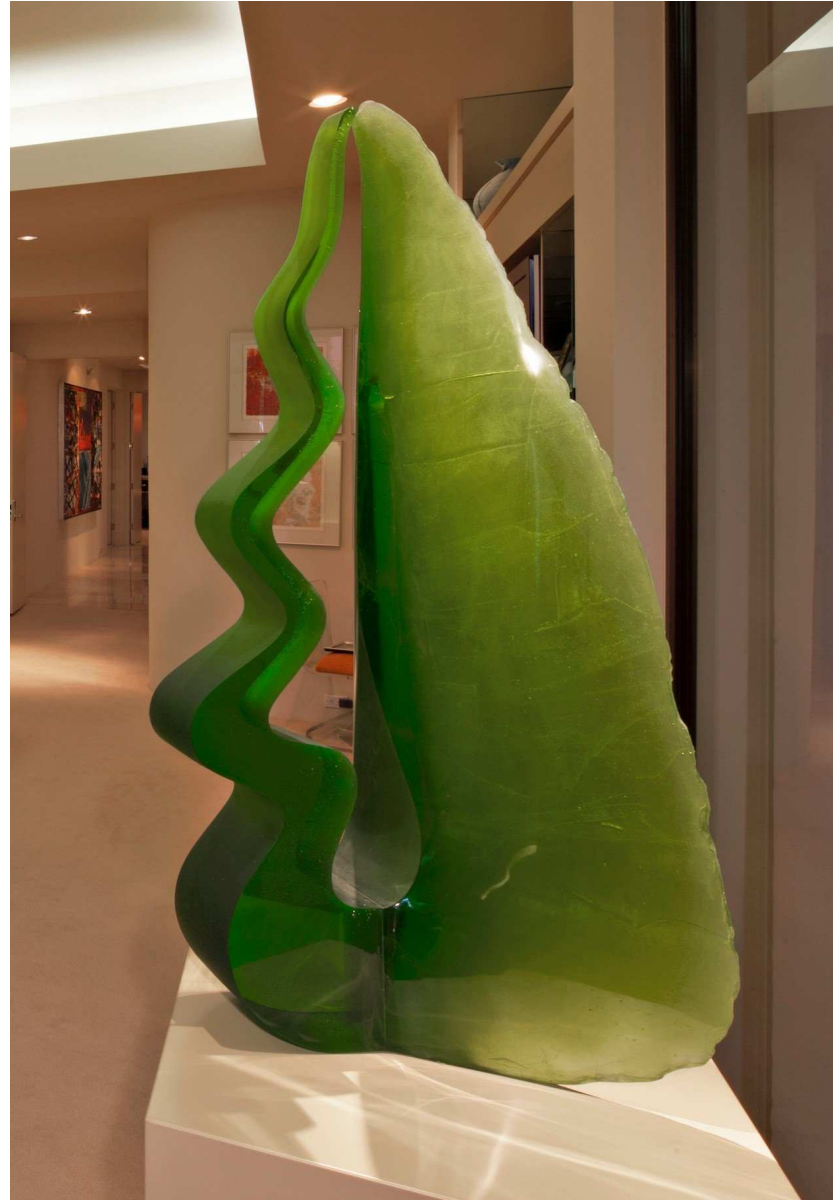
RANCHO MIRAGE ARTFUL CONTEMPORARY

Providing yet more wall space and square footage for art and casual living, this new family room was catalyst for numerous design updatings throughout. Setting the tone for this warm, relaxing room is a custom hand-knotted rug by Mansour Modern. A collection of J. Robert Scott upholstered pieces in rich chenilles surround a stainless and glass coffee table. A pair of cube ottomans in leather provide further seating when necessary, and a JRS light wood veneer console anchors the room and offers yet another surface for art. Displayed to the left are glass pieces by Dan Dailey and William Morris on the console, while a large Terence La Noue hangs above the sectional sofa.

All aspects of this newly designed and enlarged family room were fabricated with the same degree of expertise and artistic care as incorporated in the numerous works of art depicted here. Along the right wall, custom built-in cabinets were designed and installed to house an elaborate media system as well as much needed storage. (Not in view, however fully shown on the previous page, are yet further additional custom cabinets for more art display and storage between the kitchen and dining table.) Note the artful creation also of a floating console beneath the sitting area's television. In the foreground beneath the exquisite collection of wall-mounted glass shapes by Venetian artist Lino Tagliapietra are custom leather and wood arm chairs by Parisian Christian Liagre.







ABOVE: Renowned glass artists' custom pieces grace this colorful master bedroom. Seattle-based Martin Blank's work in shades of orange are shown in contrast the glass sculpture in jewel-like gradations of green by Czech artist Machael Pavlik. OPPOSITE PAGE: A pair of Hans Hoffman water colors seem to dance above the bed.



RANCHO MIRAGE ARTFUL CONTEMPORARY



Art and function are the theme of this master vanity area remodel. An L-shaped vanity was designed to accommodate our client's remarkable collection of day-wear jewelry with all drawers cleanly lined in celadon ultrasuede fabric and appropriately partitioned for various sizes and types. The exterior of the vanity is finished in celadon hue shagreen, faux ivory pulls, a solid marble inset top, and jewelry-finished metals legs. A J. Robert Scott Clasp mirror has been creatively suspended as if floating in air. Accompanying the vanity is an interpretive glass ladder by famed artist Thornton Statton.



A pair of J. Robert Scott goatskin and lacquered side tables with Brunschwig & Fils glass and nickel cylinder lamps flank this guest room's bed. Custom art pieces by Thornton Statton (left) and Sam Gilliam (right) are prominently displayed.



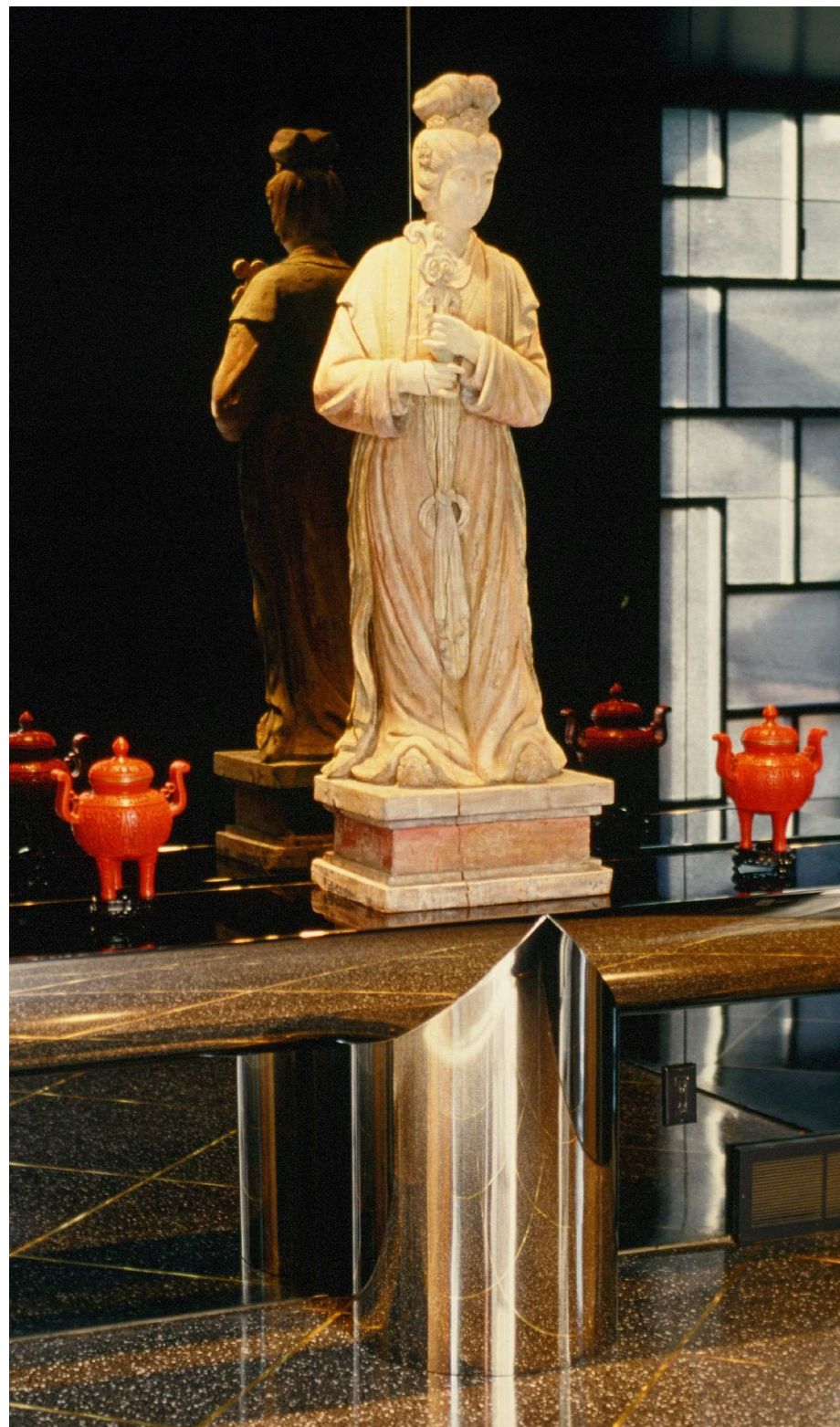
ASIAN INFLUENCE

ASIAN INFLUENCE

In a perfect tribute to those who enter this quiet and refined Asian-inspired home, a centuries old Quanyen statue greets all. It is such poetic justice that a goddess of mercy should cast her sight over this sophisticated and serene setting.

In keeping with Asian culture, this residence exudes a definite sense of mystery and introspection. From the dark mirrored entry, one notices a dining room of black lacquered walls which come to life with cream, Chinese red and gold highlights. Exquisite 18th century Chinese tapestries mounted on panels complement the mood.

The home, with its very comfortable upholstered seating areas, displays a collection of museum quality adornments. A pair of Chinese ancestrals flank both ends of the large living room and adjoin-ing den. They seem to admire the thoughtful mix of Japanese low tables constructed of single wood planks, and a pair of wooden altar chairs accompanied by red lacquered trunks.





ABOVE: 18th century Chinese tapestries mounted on panels provide the visual backdrop for this dining room. OPPOSITE PAGE: An antique Quanyen, goddess of mercy, stands atop a Brueton polished nickel console.





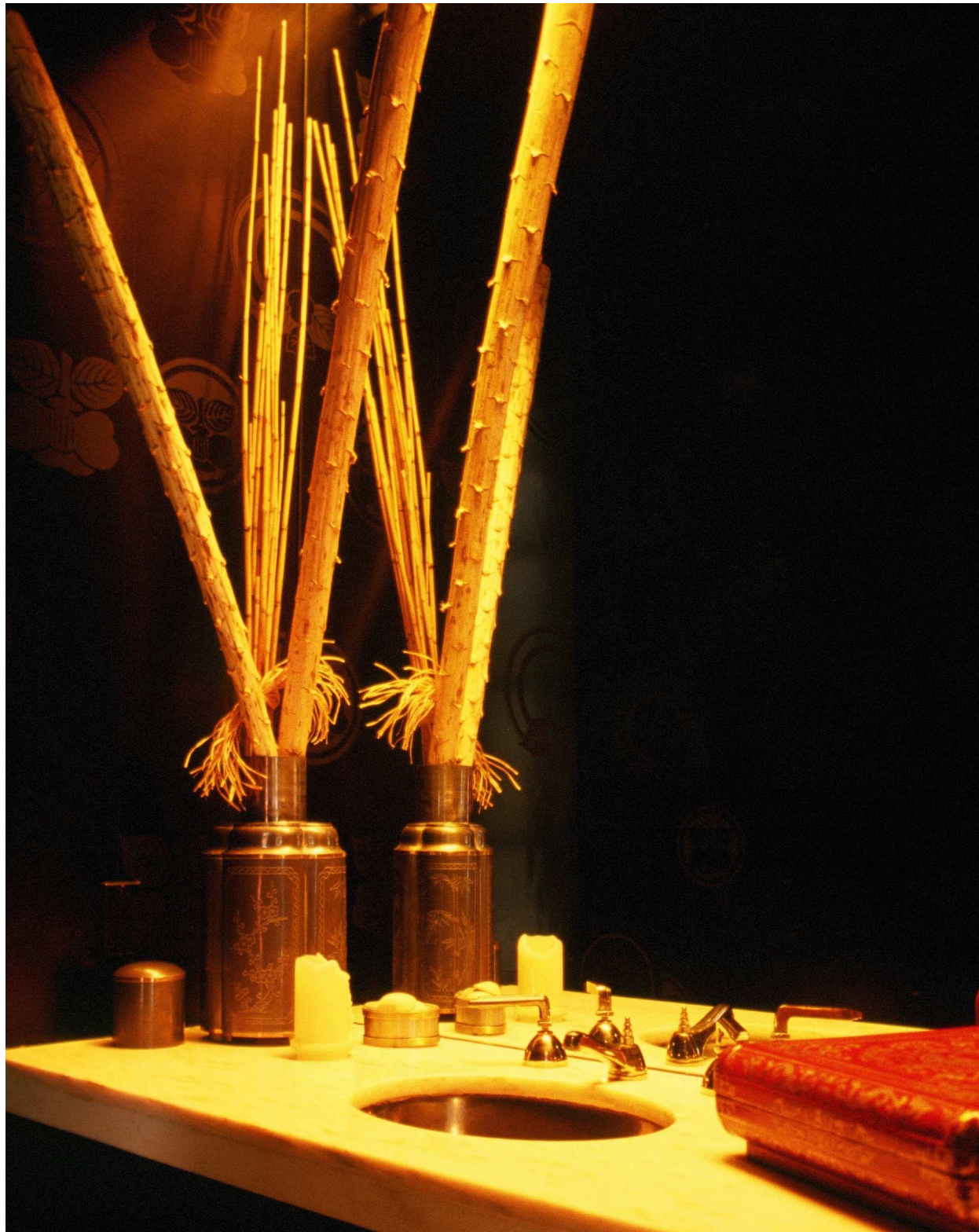
A large, flat woven straw mat provides a neutral canvas for this spacious living room. Two rare museum quality antique Japanese low tables which exhibit tops constructed of single wood planks are paired with remarkable antique Chinese ancestrals, two antique armed altar chairs and Chinese orange-red lacquered trunks/ boxes.





ABOVE: This dramatic red lacquered office is an excellent example of how easily Asian design blends with contemporary embellishments. An antique Japanese stacked tansu has a stately and mature presence alongside of this room's modern furnishings. OPPOSITE PAGE: A cozy den with a sitting area of soft upholstery in ivory silk is accented with black silk pillows, and antique Chinese ancestral and a low round lacquered table.





Completing this tour, a surprising red lacquered office is the setting for an amazing Japanese tansu and sleek desk, while a contemporary stainless bed creates a focal point in a perfectly appointed master bedroom.

OPPOSITE PAGE: An antique Chinese screen carries the room confidently as it provides an artful backdrop for a contemporary Brueton polished stainless steel master bed.
LEFT: This very dark and moody vignette gives hints of the black and gold silk upholstered walls.



DESERT RETREAT



DESERT RETREAT

This adobe-style townhouse in Scottsdale was purchased as a winter get-away by a Midwest couple. And although small in size, this retreat makes up for any short-comings. From an architectural and interior design perspective, the eye senses a more voluminous impression due in part to tall ceilings, and the selection and precise installation of art and window treatments. The design of this restful residence begins with the use of soft browns and tans which paint a very soothing neutral palette. Luxurious silks in warm butter yellows, peaches and creams continue this comfortable canvas. Smartly appointed, this townhome artfully mixes a collection of antique Indian prints, a Sherri Karver painting and an A.M. Cassandre affiche with the likes of J. Robert Scott, Dennis & Leen, Formations, Holly Hunt Ltd., and custom Swanson-Ollis furniture.

Although small in scale, this residence is very ample in luxury, style and artistic presence.



A collection of antique etchings of early Native American woven baskets and pottery make a perfect impression in this Arizona winter retreat. Positioned beneath is a reproduction Dennis & Leen rustic hand-planed and waxed console.

DESERT RETREAT



This kitchen vignette is pleasantly appointed with an eclectic yet casual mix of furnishings. A rare vintage Cassandre French affiche sets a very entertaining pose above an iron and stone Formations table. Accompanying is a collection of Donghia woven reed chairs with comfortable leather seats.



A pair of J. Robert Scott Josephine lounge chairs upholstered in buttercream silk tapis seems to frame the backdrop of an urban scene painting by artist Sherry Karver. Between the lounge chairs is a pale J. Robert Scott goatskin side table. A pair of Charles Fradin white gold leaf twist lamps flanks opposite ends of a slightly overscaled dark coffee-colored J. Robert Scott Ridge table, which serves dual purposes as a console and as a dining table.



LEFT: A desk by Brueton is shown in glass and polished nickel A-frame base alongside a Donghia woven reed and leather side chair. The Mattone desk lamp by Donghia is made of handblown Venetian glass. A J. Robert Scott lounge chair with an accompanying ottoman (partially shown) upholstered in a chartreuse boucle fabric offers a comfortable option for casual reading or relaxation.

OPPOSITE PAGE: A custom Swanson-Ollis bed upholstered in J. Robert Scott raffia and appointed with Anichini linens sets the focal point of this bedroom. A lounge chair and ottoman upholstered in JRS silk chenille fabric is trimmed with kidskin welt.





**CLASSICALLY
CASUAL
URBAN RESIDENCE**



ABOVE: A limestone staircase leads to this second floor entry which features an antique Chinese table with a scrolled bamboo surface beneath a vintage framed French affiche. A J. Robert Scott Portuguese arm chair with chinoiserie details appears with a collection of framed 1678 Malabaricus flora etchings. OPPOSITE PAGE: An inviting living room fireplace vignette highlights a pair of antique Spanish candlesticks and a pair of French cast iron architectural finials.

CLASSICALLY CASUAL URBAN LIVING

The planners of Hancock Park in Los Angeles had wonderful foresight when designing this area in the 1920's. From the stately homes which border the Wilshire Country Club to the planned expanse of avenues lined with elegant duplexes, attention to detail was never missed. Built with the same care as the neighborhood's refined private estates, these duplexes embody the grander European interpretations of that era.

This particular apartment reflects a decidedly Spanish Mediterranean influence with yet a subtle Moroccan inference. Our intent was to create an inviting yet sophisticated feel, however totally current and comfortable by today's standards as well.

Upon arriving, a spacious recessed vestibule greets all visitors. Immediately one notices a large terra cotta staircase







Custom painted and glazed panels seem to add an architectural element to this Spanish Moroccan styled duplex. A collection of prints featuring architectural details and decorations is prominently centered at one end of the salon while a large reproduction carved giltwood mirror faces the fireplace and one of the room's seating areas.

CLASSICALLY CASUAL STYLE

which leads to a mid-rise landing which features a large intricately carved framed mirror. Finally reaching the entry landing, there is a certain sense of the unexpected. Asian and European furniture and accessories mix effortlessly and even whimsically with a few modern touches. The first interior viewing is of a striking French affiche which fills the wall above an antique Chinese console with scrolled bamboo top. Continuing into the living room, a warm and bright floor accented by apple green silk draperies sets the tone. Classic painted wall panels of a light oatmeal color allude to a sense of height and vertical support to softly glazed wood beams. These panels also serve as a perfect backdrop and framing for a collection of prints of architectural details and decorations. Even a clean-lined polished travertine mantel blends smoothly with its surrounding period embellishments.

The dining room is a striking example of the home's cozy aura. A floor-to-ceiling framed French affiche with its playful, dancing actor and a complementary contemporary red painting which subtly depicts elements of the Wizard of Oz counterbalances a beautiful hand-planed and hand-waxed dining table, 18th century gilt framed mirror and a lovely 19th century inlaid wood French buffet. Additionally, tall ebony and ivory striped satin draperies help give a voluminous impression to this otherwise smaller room. This interesting dance of unexpected visual partners



continues throughout. The den and master bedroom each display more of the client's eclectic passions and collections. Yet, both rooms exude sumptuous comfort and privacy. It is this latter description that makes this stylish home a perfect respite from the city's often relentless urban pace.



A J. Robert Scott Portuguese arm chair with chinoiserie decorations and black leather sets the focal point of this office vignette. The flooring is a natural color sisal carpet.



In order to give the illusion of height to this dining room, tall floor-to-ceiling drapery panels in alternating ivory and black satin stripes were installed over a pair of French windows. A large red painted contemporary canvas by Kansas City artist Bill Rainey and a whimsical 1920's French affiche provide a sense of mirth and drama as they offset otherwise classical furnishings. Centering the room is a custom hand-planed dining table and a collection of clean-lined chairs in raffia and dark chocolate silk. Also noted are a 19th century antique French buffet with a burled wood inset front and a large 18th century French carved giltwood mirror. Perfectly staged, this small yet charming room is the scene of many intimate dinners with friends.







OPPOSITE PAGE: A large custom sectional sofa in chocolate chenille and tan woven fabrics is offset by a large zebra skin ottoman/table. A pair of woven leather and polished nickel lounge chairs flank a custom Swanson-Ollis occasional table. Eclectic art in the form of a collection of 18th century flora etchings and a large moody oil painting offer surprising contrast. ABOVE: The residence's master bedroom is a study of comfort amid contrast. A pair of Dakota Jackson dressers serve as side tables to a pair of Swanson-Ollis marble and nickel lamps. Not shown in entirety, a pair of John Ilg works of art and a pair of antique English carved wood mirrors are set on opposite walls. A large leather ottoman rests at the end of the bed while a pair of antique wooden Chinese benches display a pair of contemporary glazed ceramic vases. Bed linens and a green cashmere blanket are by Anichini.



DESIGNER SHOWCASE HOUSES

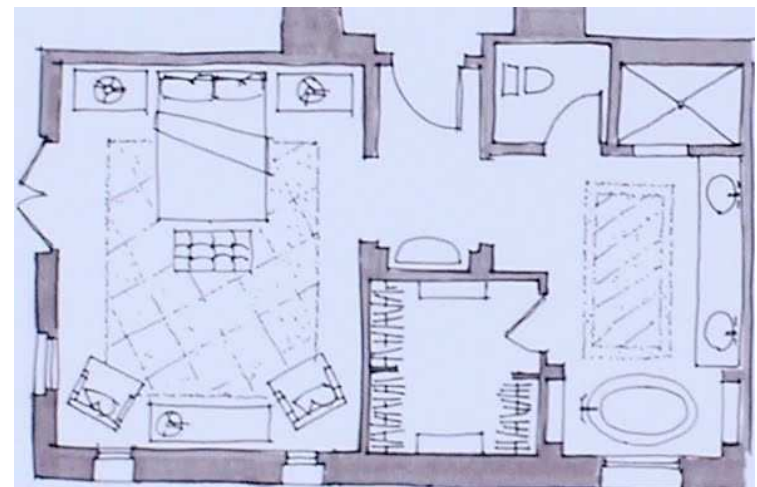
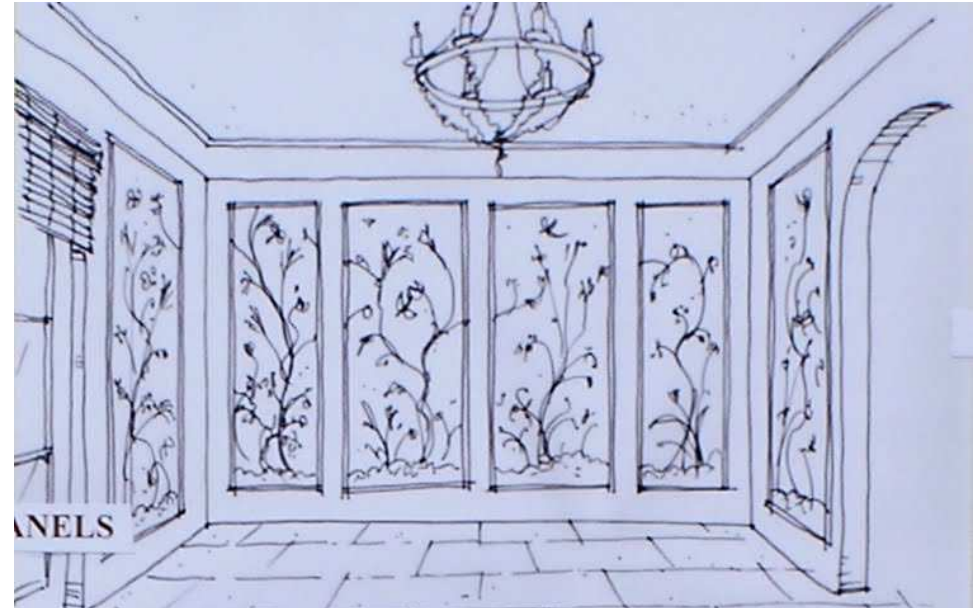
2009 CASA CALIFORNIA

PRESENTED BY THE PHILHARMONIC
SOCIETY OF ORANGE COUNTY

SHADY CANYON
IRVINE, CALIFORNIA

MASTER GUEST SUITE

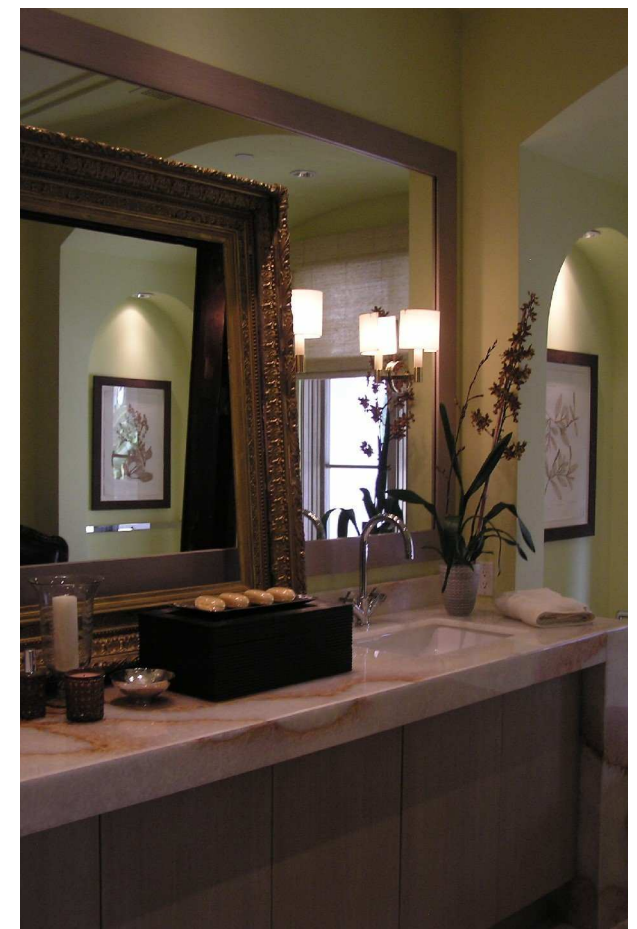
The overall Mediterranean style of this canyon home was given a surprising twist with subtle contemporary embellishments. One will notice the absence of base and crown moldings as well as cleaner-lined bathrooms. The inspiration for our design of this large guest suite began with our love for a new treatment for custom hand-painted silk wallcoverings by Fromental of London. We started with panels of one continuous scene the bedroom's visual impact and began collecting a perfect mixture of antique furniture and eclectic and classically inspired furnishings. Our intent was to create an very private and sensual respite from a day's hectic routines.







Upon entry to this guest suite, one finds a lovely vignette created within the contemporary arched alcove. An eighteenth century wood carved gilt French mirror sits above our French-inspired reproduction Richard dresser. A pair of Dessin Fournir 22k gold leaf Wittington console lamps and a remarkable pair of nineteenth century Chinese export porcelain dishes. In partial view are several of the framed antique nature prints by Austrian botanist Constantin von Ettingshausen, c. 1856, which adorn the entry and bathroom walls. As an interesting contrast to the bathroom's contemporary lines and finishes, an eighteenth century gilded frame dissects the large expanse of mirror, as if to create equal vanity areas. A nineteenth century English ribbed writing box also complements the frame.



Our theme of classically inspired furnishings set against the bathroom's clean-lined architecture is most evident in the room's sitting area. A J. Robert Scott Portuguese arm chair with chinoiserie details flanks a Gregorius Pineo neoclassical side table. As aforementioned, the collection of Ettingshausen nature prints continues throughout the entry and bathroom. The contemporary toilet room is also surprisingly adorned with a pair of French wood reliefs with gold leaf accents. Additionally, a closer view is given of antique embellishments above the sink's streamlined onyx surface.



Fromental's hand-painted silk panels have been casually installed with grosgrain ribbon and brass nail heads. As one follows the panels around the room, one continuous scene unfolds. In these two vignettes, an eighteenth century French console with marble top features a 22k gold leaf Kew bamboo lamp by Dessin Fournir. Likewise, our own French-inspired Lys de Mer curved oak console provides an interesting setting for a large green onyx bowl and Hinson ceramic lamp. Hanging above is an antique French barometer.







To offset the room's classical appointments, a Mansour Modern geometric rug sets a nice foundation. At the end of the bed is a pair of cleanlined ottomans upholstered in dark horse hide with leather piping. Also, Anichini provided the luxurious bed linens shown.

2011 MAISON DE LA MER

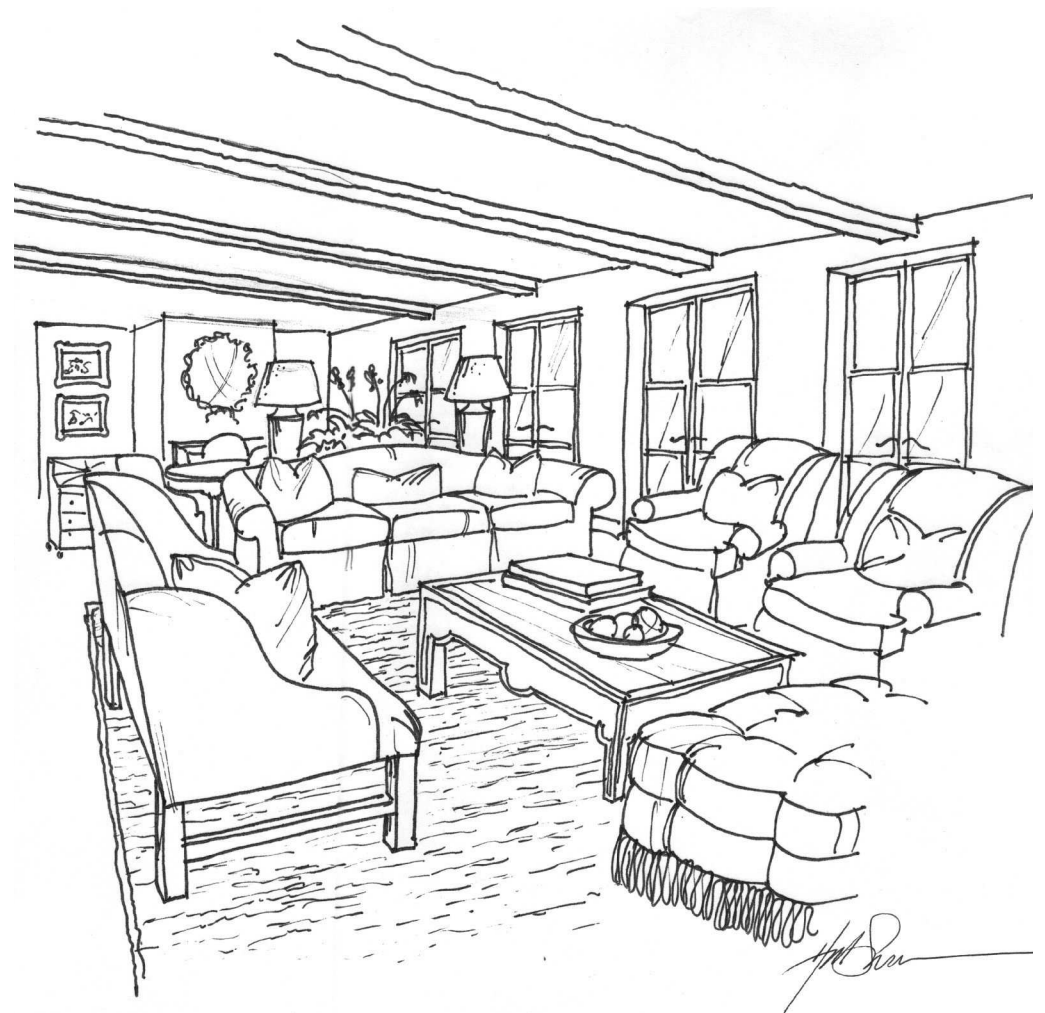
*PRESENTED BY THE PHILHARMONIC
SOCIETY OF ORANGE COUNTY*

*CRYSTAL COVE
NEWPORT COAST, CALIFORNIA*

GREAT ROOM & LOGGIA

Perched at the highest point of Crystal Cove, this charming French mediterranean-style home commands exquisite views of the Pacific and northward to Newport Beach harbor. Upon arriving at the estate, our relaxed yet upscale rendition for the great room and exterior loggia certainly set an inviting tone for the home. We teamed primarily with the renowned firms of Dessin Fournir, Dennis & Leen, Formations, Paul Ferrante Inc., Holly Hunt, Decorative Carpets, Hermes of Paris, Orchids de Oro and John Nelson Antiques---and the rest was magic.

Our design objective was to accentuate the refreshing lifestyle of Californian coastal living and to also comfortably blend formal and upscale casual design elements. Instead of partially blocking one's view of the ocean, we decided to allow the expansive windows and unending ocean views to become the star point of the show. Everything else would play the role of back-up singers for this lovely visual concert.







LEFT: An amazing welcome awaits all who enter this coastal residence. A lovely vestibule leads directly through an open air interior courtyard and then to the home's formal entry. In this scene in which the eye is magically drawn through the great room, large open French doors and loggia, visitors are immediately captivated by an almost perpetual view of the Pacific Ocean and local shoreline.

OPPOSITE PAGE: Casual elegance is a sometimes over-used Southern California term, however the blend of grand appointments and rich yet comfortable furnishings in this great room definitely gives one the perfect moment to reflect upon this concept.

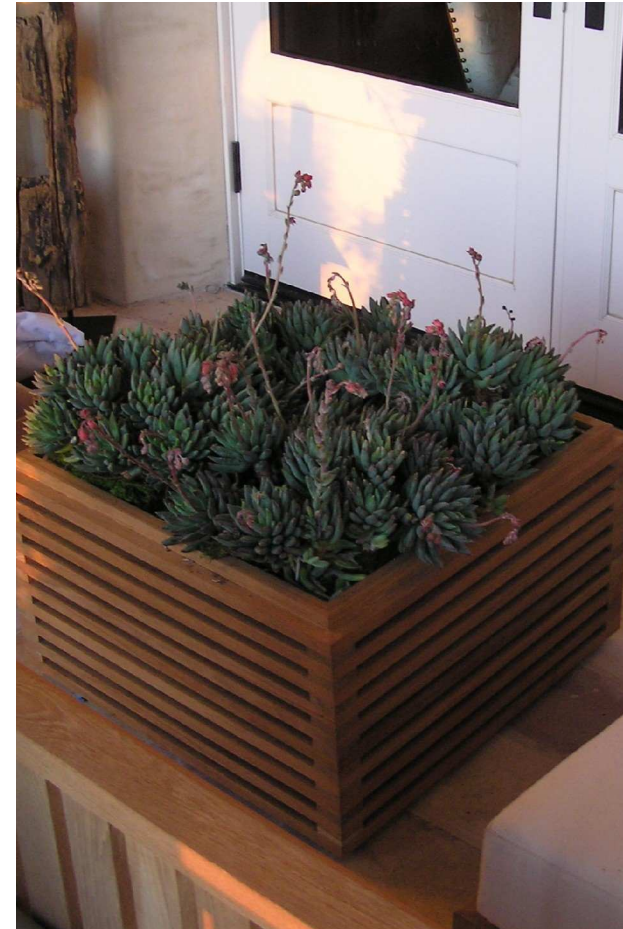




Dessin Fournir's hand-planed Hayward dining table in mahogany and gold leaf accents is the center of all dining affairs. A center piece in the form of three antique teak containers filled with succulents by Orchids de Oro set the tone for an elegant meal. Hermes Les Orchidees china, St. Louis crystal stemware and exquisite Puiforcat sterling flatware provide the finishing touches. Guests will be seated in alternating decorative Ribbon Back and slip-covered Regency side chairs by Dessin. One of two custom Paul Ferrante iron lanterns is seen overhead. The custom limestone fireplace adorned with a custom Ferrante fire screen is a charming backdrop for this dining scene. Above is featured a Portuguese carved and lacquered mirror. Additionally in the far corner, an eighteenth century French buffet with a pair of antique mercury glass balls is perfectly situated beneath a 1950's Dutch beach painting.

One of our signature design statements is the equal treatment of the room's surfaces. The ceiling, walls and floor must receive requisite attention in order to achieve proper balance. In this Great Room, a richly beamed ceiling, a hand-planed light walnut herringbone wood floor and stone and plaster walls create the perfect canvas. The eye should only sense this balance without having to figure why it senses total comfort.





Complementing the region's sunny arid climate, succulents were the perfect selection by Orchids de Oro. The first vignette features an nineteenth century French painted castiron urn by John Nelson Antiques. Presented on iron stands in the center photo, a collection of antique Indonesian teak fence posts and collars from Orchids de Oro are shown. In the third frame, Holly Hunt's contemporary teak planter displays a mound of flowering succulents plants.



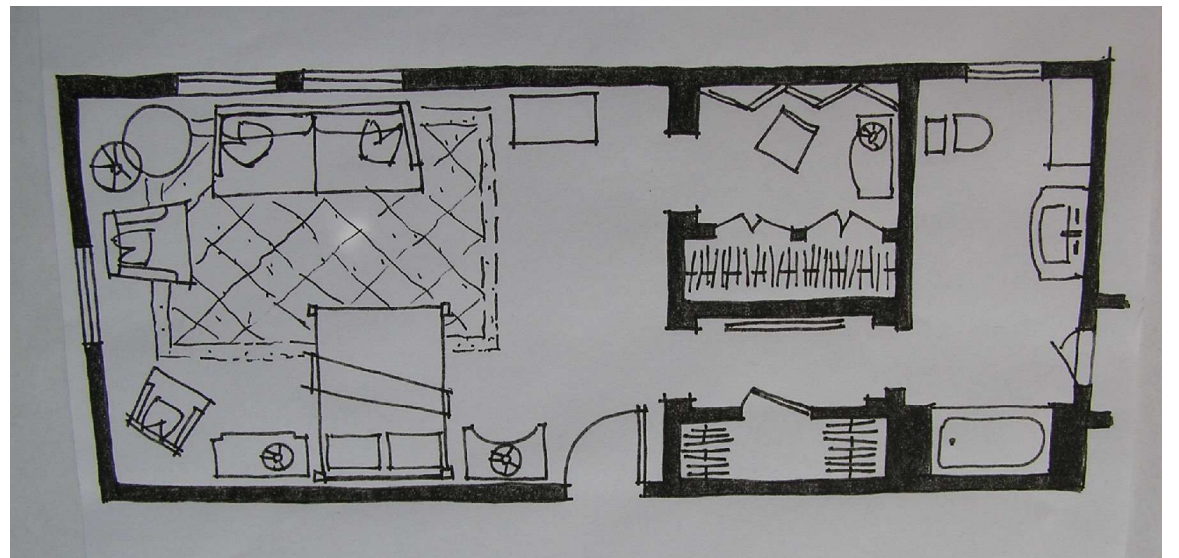
2011 PASADENA SHOWCASE HOUSE

LA CANADA FLINTRIDGE, CALIFORNIA

MASTER BEDROOM SUITE

The objective for the revival of this 1926 Paul William's country manor English tudor home was to design in context to the original grandeur and style of the period. Our selections were guided colorwise by the original bathroom tiles which could be easily viewed upon one's first entry to the suite, and by our desire to create a very mature yet relaxing setting given that the residence's first owners used the estate as a weekend retreat from Los Angeles.

VIGNETTE PHOTO: A refined side table by Dessin Fournir made of macassar ebony veneer is the setting for a St. Louis crystal vase, miscellaneous design books, orchids and a gold-leaved reproduction gourd. A pair of Dennis & Leen reproduction Malabaricus botanicals are in the background.







RIGHT: *An rare and antique Chinese Foo dog sits atop a tall Dessin Fournir mahogany and crotch mahogany veneer Manchester dresser. As seen throughout, the room, a collection of Dennis & Leen reproduction Malabaricus botanicals frame the dresser.*

OPPOSITE PAGE: *A plein air painting of an Illinois river setting accompanies a beautiful Dessin Fournir reproduction Everett poster bed in walnut, an attractive concave-shaped mahogany Handley chest, a burled walnut Brin dresser, a pair of bedside chiniosserie Orleans lamps and a lovely creme and gold-accented Gothic arm chair. The bed linens and wooden tray and china were provided by Hermes of Paris, as well as a light-weight cashmere blanket by Nancy Coltus of Beverly Hills. A large collection of Malabaricus prints complement all walls.*

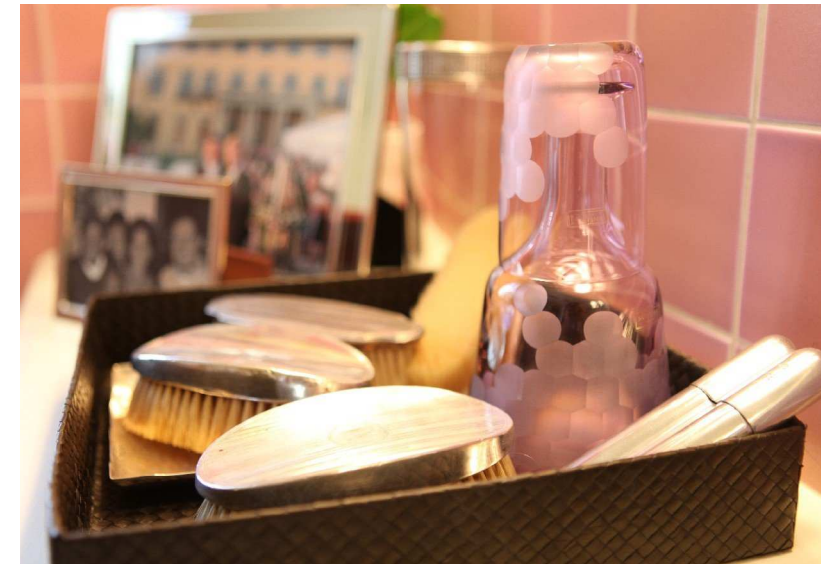




LEFT: A California plein air painting is complemented by Dessin Fournir's Regency Bamboo Caned Bergere in amethyst silk velvet. The adjacent dressing room also displays Dessin's Ashton chest, Kew bamboo lamp, a mahogany and rosewood veneer Otley mirror, a crotch mahogany Fleming Screen and Almond side chair in Rose Cummings striped silk.

OPPOSITE PAGE: An amethyst and light pink antique Khotan rug atop dark chocolate brown sisal carpet provides a focal point for the room's sitting area. A pair of Dennis & Leen reproduction Malabaricus botanicals accents Dessin Fournir's setting of their Austin club chair in a very tactile linen/silk blend fabric, Mindora sofa in a handsomely supple natural raw silk, macassar ebony veneer Shelbourne side table and St. Germain floor lamp. An Hermes of Paris cashmere throw and a pair of dusty amethyst pillows in Rose Cummings silk damask smartly accessorize the sofa. The Conrad window treatments fabricated of naturally woven coconut fiber surprisingly offer a diffused yet private balance to the room.





An antique Oushak runner with its dusty rose and lilac accents anchors this vintage bathroom. Of special note, this bathroom has weathered the ages beautifully as all tilework is original to the house, even the black and gold Art Deco border. A small pair of California plein air paintings are partially displayed at one end of the room while a pair of paintings depicting the USS Constellation flank the opposite wall. Pictured above is an artfully woven leather box with a collection of antiques sterling hair brushes and an amethyst crystal decanter and water glass by St. Louis of Paris. In partial view in the lower quadrant of the photo to the left is an antique reproduction bench upholstered in dark chocolate kidskin leather by Dessin Fournir.



2011 VIRGINIA ROBINSON GARDEN TOUR

BEVERLY HILLS

A MARRIAGE OF INTERIOR DECORATION & FLORAL DESIGN

The 2011 Tour marks our second consecutive year of participation. The Garden Tour is the grand one day fund raising event for the preservation of the acclaimed Virginia Robinson museum estate in Beverly Hills. As is tradition, interior designers, florists and landscape designers are paired in each room with the directive to recreate each space in the spirit of the home's original design and elegance. We have been fortunate to secure the living room both years, no small feat in the world of design home tours. In collaboration with floral designer Tanya Sowa, we chose to create an understated, yet casually elegant room. A bound sisal rug was used as the foundation, and all furnishings were supplied by the Dessin Fournir Collection. (Before shots of the living room can be viewed on pages 232 and 233.)

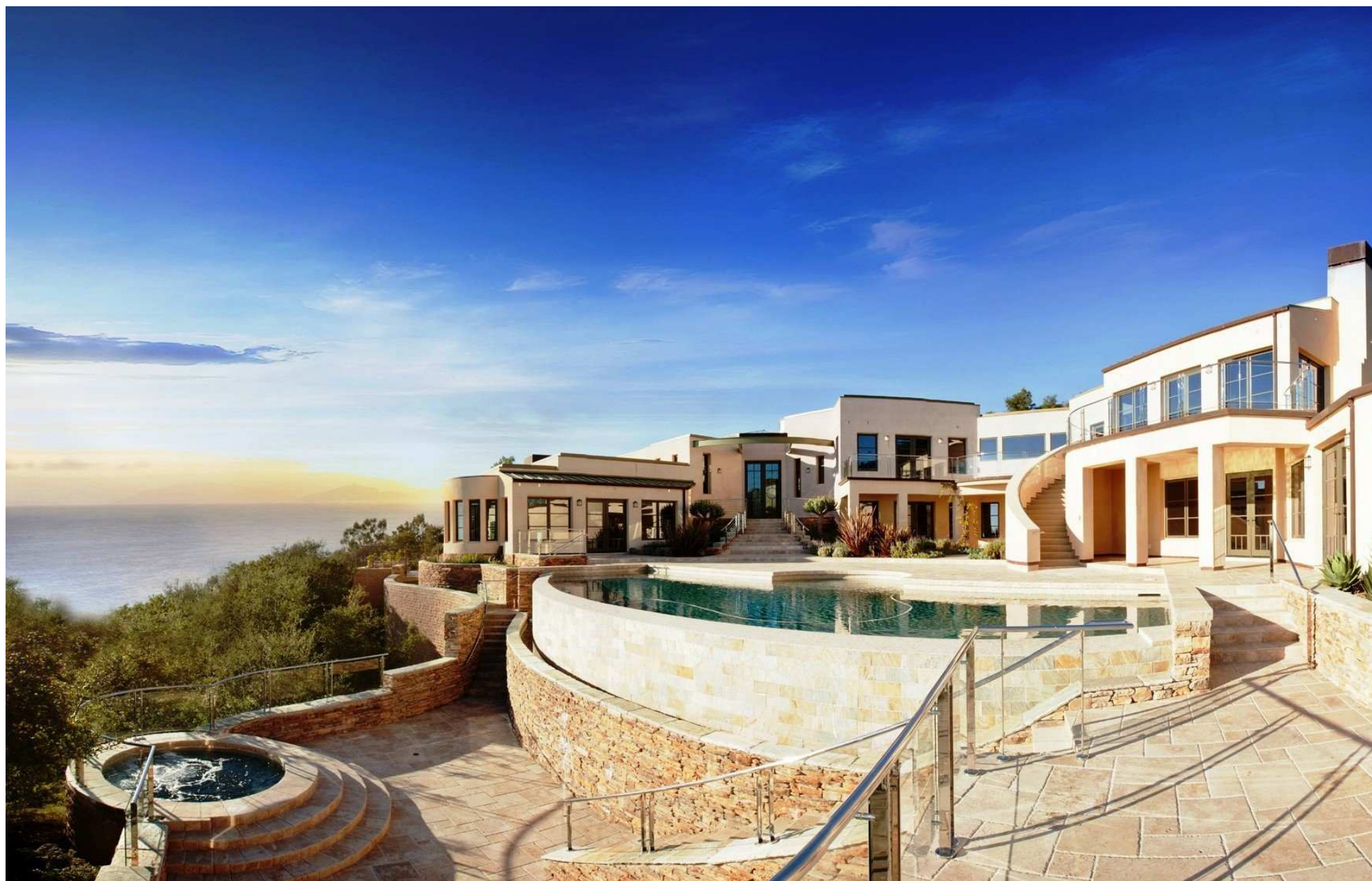






This decorative vignette features the hand-planed Dessin Fournir Morgan center table, a collection of four Donghia classical carrera marble candlesticks and hydrangeas. The previous page depicts among many lovely furnishings, a museum-quality Italian lacquered and ivory cabinet flanked by a pair of Dessin Fournir La Baronne Wall Panels and Regency arm chairs.

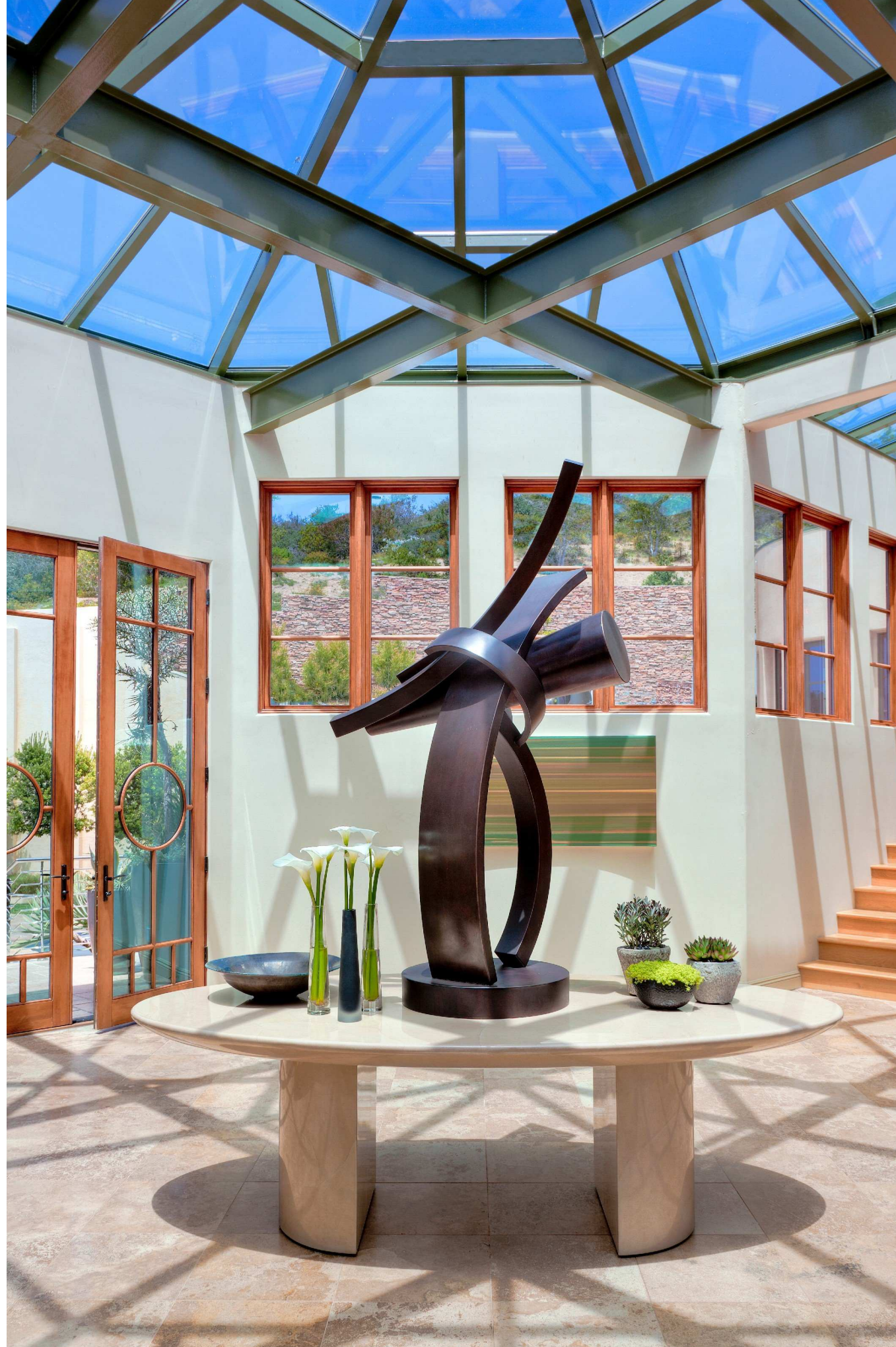




2012 Orange County Philharmonic House of Design
Laguna Beach
FOYER AND LIVING ROOM

COSTA AZUL

Secluded high atop a cliff on the southern edge of Laguna Beach, this adventurous contemporary estate commands remarkable views of the coast and blue ocean below. As designers of the foyer and living room, our job was to create an indelible and impressive impact, thereby setting the tone for the 2012 House of Design Tour. In regard to furnishings we were supported by J. Robert Scott, Paul Ferrante Inc., and Michaelian & Kohlberg, the creme de la creme of our industry! However, in keeping with our design goal of sophisticated understatement, we joined forces with noted LA-based art consultant Brenda Harrop, who curated a most impressive collection of artworks by nationally and internationally renowned artists along side of a few surprising pieces by highly regarded emerging Californian artists. What a great balancing act of art and decor!







A contemporary, mixed media still life by emerging artist Robert Minervini floats behind a sumptuous setting of J. Robert Scott furnishings. Opposite page features a large Andy Moses acrylic painting and Michaelian & Kohlberg hand-knotted wool rug.









THE FURNISHINGS COLLECTION

furniture fabrics wall coverings framed art



CLERMONT LOUNGE CHAIR



CLERMONT LOUNGE CHAIR



MONTECITO LOUNGE CHAIR



MONTECITO LOUNGE CHAIR



RICHARD DRESSER



CHAUMONT DRESSER



FLORENTINE
CONSOLE



NAPOLEON
CONSOLE



FLORENTINE CONSOLE



LYS DE MER CONSOLE



ST. TROPEZ OTTOMAN



SANTA BARBARA SOFA



ANNETTE CONSOLE

Bala. lat.
 බලා mal.
 فلة Arab.
 കേര bram.



MALABARICUS BANANAS no. 1

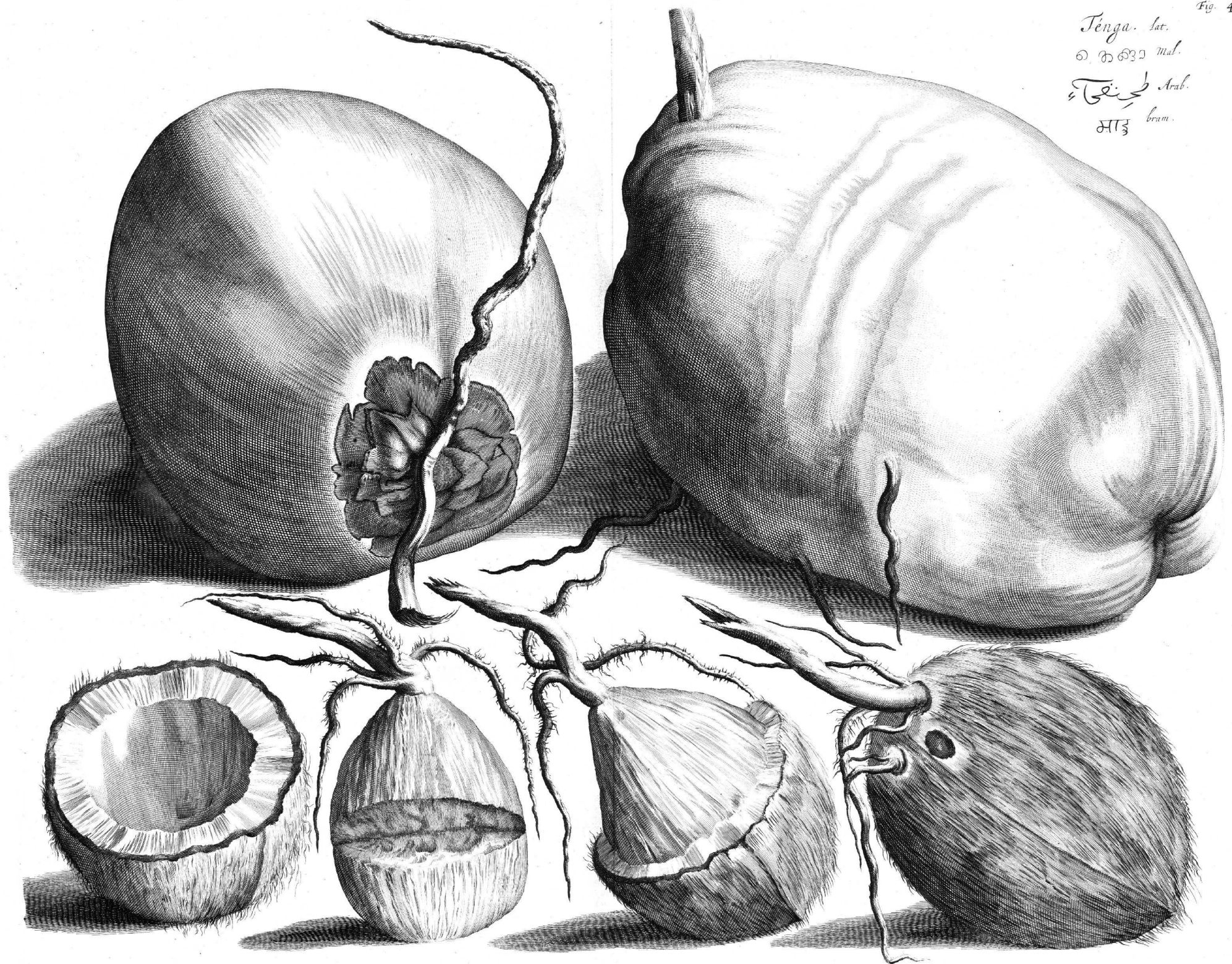
fabrics wall coverings framed art

Bala. lat.
 ବାଲୁ Mal.
 بخنفاء Arab.
 ବେଣି bram.



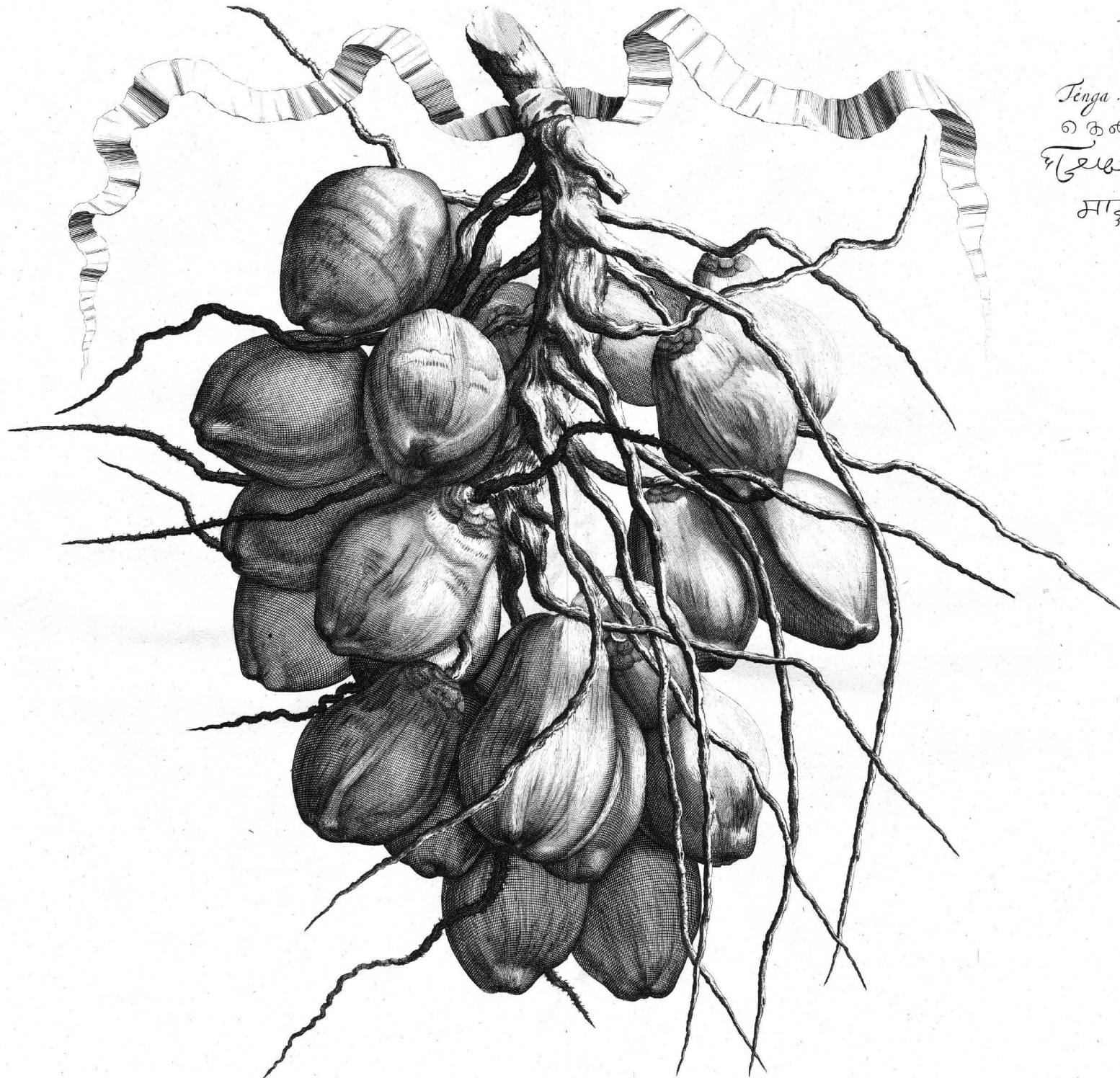
MALABARICUS BANANAS no. 2

fabrics wall coverings framed art



MALABARICUS COCONUTS no. 1

fabrics wall coverings framed art



Tenga. latina.
 കൊങ്ങി *malabarica.*
 جوز الهند *Arabica*
 माण्ड *lingua bramanic*

MALABARICUS COCONUTS no. 2

fabrics wall coverings framed art

Kapá-tsja-ká



MALABARICUS PINEAPPLES no. 1
fabrics wall coverings framed art

Kapá-tojakká



MALABARICUS PINEAPPLES no. 2

fabrics wall coverings framed art



SWANSON-OLLIS INTERIORS

HAL SWANSON & DAN OLLIS

LOS ANGELES

T 323.933.8745

F 323.933.8746

WWW.SWANSON-OLLIS.COM



